

Datasheet for ABIN655634

**anti-PALB2 antibody (AA 546-574)**[Go to Product page](#)**2** Images

## Overview

Quantity:	400 µL
Target:	PALB2
Binding Specificity:	AA 546-574
Reactivity:	Human
Host:	Rabbit
Clonality:	Polyclonal
Conjugate:	This PALB2 antibody is un-conjugated
Application:	Western Blotting (WB), Flow Cytometry (FACS)

## Product Details

Immunogen:	This PALB2 antibody is generated from rabbits immunized with a KLH conjugated synthetic peptide between 546-574 amino acids from the Central region of human PALB2.
Clone:	RB19074
Isotype:	Ig Fraction
Purification:	This antibody is purified through a protein A column, followed by peptide affinity purification.

## Target Details

Target:	PALB2
Alternative Name:	PALB2 ( <a href="#">PALB2 Products</a> )
Background:	This gene encodes a protein that may function in tumor suppression. This protein binds to and

## Target Details

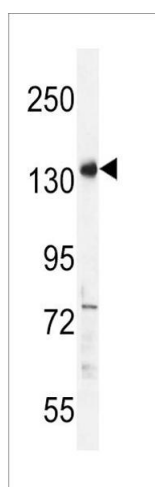
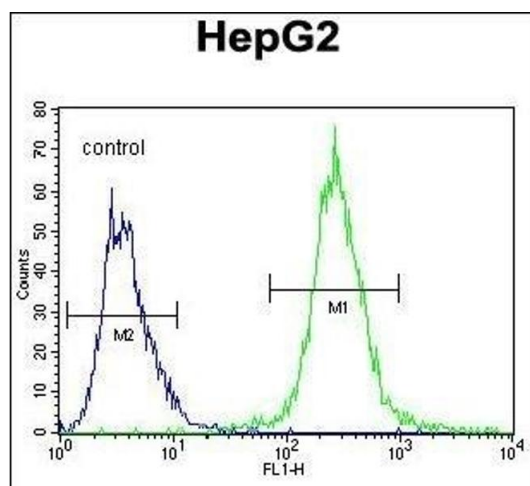
	colocalizes with the breast cancer 2 early onset protein (BRCA2) in nuclear foci and likely permits the stable intranuclear localization and accumulation of BRCA2.
Molecular Weight:	131295
Gene ID:	79728
NCBI Accession:	<a href="#">NP_078951</a>
UniProt:	<a href="#">Q86YC2</a>
Pathways:	<a href="#">DNA Damage Repair</a>

## Application Details

Application Notes:	WB: 1:1000. FC: 1:10~50
Restrictions:	For Research Use only

## Handling

Format:	Liquid
Buffer:	Purified polyclonal antibody supplied in PBS with 0.09 % (W/V) sodium azide.
Preservative:	Sodium azide
Precaution of Use:	This product contains Sodium azide: a POISONOUS AND HAZARDOUS SUBSTANCE which should be handled by trained staff only.
Storage:	4 °C,-20 °C
Storage Comment:	Maintain refrigerated at 2-8 °C for up to 6 months. For long term storage store at -20 °C in small aliquots to prevent freeze-thaw cycles.
Expiry Date:	6 months



#### Flow Cytometry

**Image 1.** LB2 Antibody (Center) (ABIN655634 and ABIN2845113) flow cytometric analysis of HepG2 cells (right histogram) compared to a negative control cell (left histogram). FITC-conjugated goat-anti-rabbit secondary antibodies were used for the analysis.

#### Western Blotting

**Image 2.** LB2 Antibody (Center) (ABIN655634 and ABIN2845113) western blot analysis in HepG2 cell line lysates (35 µg/lane). This demonstrates the LB2 antibody detected the LB2 protein (arrow).