

Datasheet for ABIN655635  
**anti-MLANA antibody (AA 34-60)**[Go to Product page](#)

## 3 Images

## Overview

Quantity:	400 µL
Target:	MLANA
Binding Specificity:	AA 34-60
Reactivity:	Human
Host:	Rabbit
Clonality:	Polyclonal
Conjugate:	This MLANA antibody is un-conjugated
Application:	Western Blotting (WB), Flow Cytometry (FACS)

## Product Details

Immunogen:	This MART-1/Melan-A antibody is generated from rabbits immunized with a KLH conjugated synthetic peptide between 34-60 amino acids from the Central region of human MART-1/Melan-A.
Clone:	RB19079
Isotype:	Ig Fraction
Purification:	This antibody is purified through a protein A column, followed by peptide affinity purification.

## Target Details

Target:	MLANA
Alternative Name:	MART-1/Melan-A ( <a href="#">MLANA Products</a> )

## Target Details

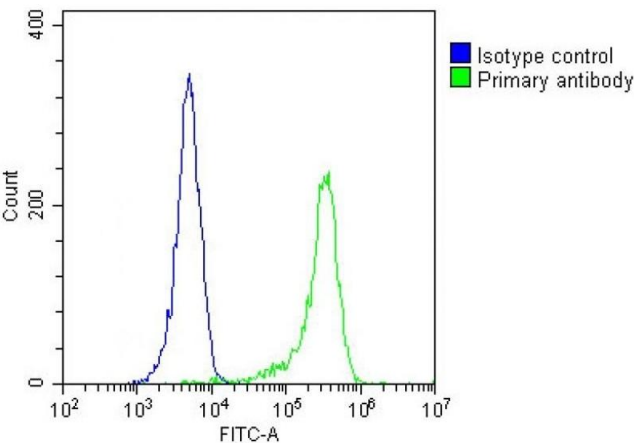
Background:	Involved in melanosome biogenesis by ensuring the stability of GPR143. Plays a vital role in the expression, stability, trafficking, and processing of melanocyte protein SILV/PMEL17, which is critical to the formation of stage II melanosomes.
Molecular Weight:	13157
Gene ID:	2315
NCBI Accession:	<a href="#">NP_005502</a>
UniProt:	<a href="#">Q16655</a>

## Application Details

Application Notes:	WB: 1:1000. WB: 1:2000. FC: 1:25
Restrictions:	For Research Use only

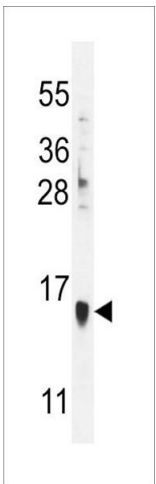
## Handling

Format:	Liquid
Buffer:	Purified polyclonal antibody supplied in PBS with 0.09 % (W/V) sodium azide.
Preservative:	Sodium azide
Precaution of Use:	This product contains Sodium azide: a POISONOUS AND HAZARDOUS SUBSTANCE which should be handled by trained staff only.
Storage:	4 °C, -20 °C
Storage Comment:	Maintain refrigerated at 2-8 °C for up to 6 months. For long term storage store at -20 °C in small aliquots to prevent freeze-thaw cycles.
Expiry Date:	6 months



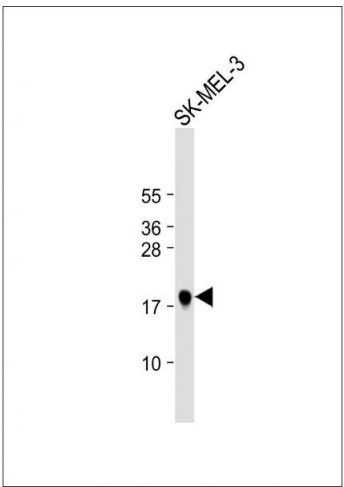
### Flow Cytometry

**Image 1.** Overlay histogram showing cells stained with (ABIN655635 and ABIN2845114)(green line). The cells were fixed with 2 % paraformaldehyde and then permeabilized with 90 % methanol for 10 min. The cells were then incubated in 2 % bovine serum albumin to block non-specific protein-protein interactions followed by the antibody (1:25 dilution) for 60 min at 37 °C. The secondary antibody used was Goat-Anti-Rabbit IgG, DyLight® 488 Conjugated Highly Cross-Adsorbed at 1/200 dilution for 40 min at Room temperature. Isotype control antibody (blue line) was rabbit IgG1 (1  $\mu$ g/ $1 \times 10^6$  cells) used under the same conditions. Acquisition of >10, 000 events was performed.



### Western Blotting

**Image 2.** RT-1/Melan-A Antibody (Center) (ABIN655635 and ABIN2845114) western blot analysis in HL-60 cell line lysates (35  $\mu$ g/lane). This demonstrates the RT-1/Melan-A antibody detected the RT-1/Melan-A protein (arrow).



### Western Blotting

**Image 3.** Anti-MLANA Antibody (Center) at 1:2000 dilution + SK-MEL-3 whole cell lysate Lysates/proteins at 20  $\mu$ g per lane. Secondary Goat Anti-Rabbit IgG, (H+L), Peroxidase conjugated at 1/10000 dilution. Predicted band size : 13 kDa Blocking/Dilution buffer: 5 % NFDM/TBST.