

Datasheet for ABIN655637
anti-ACPP antibody (AA 407-435)[Go to Product page](#)

2 Images

Overview

Quantity:	400 µL
Target:	ACPP
Binding Specificity:	AA 407-435
Reactivity:	Human
Host:	Rabbit
Clonality:	Polyclonal
Conjugate:	This ACPP antibody is un-conjugated
Application:	Western Blotting (WB), Immunohistochemistry (Paraffin-embedded Sections) (IHC (p))

Product Details

Immunogen:	This PAP antibody is generated from rabbits immunized with a KLH conjugated synthetic peptide between 407-435 amino acids from the Central region of human PAP.
Clone:	RB19099
Isotype:	Ig Fraction
Predicted Reactivity:	B
Purification:	This antibody is purified through a protein A column, followed by peptide affinity purification.

Target Details

Target:	ACPP
Alternative Name:	PAP (ACPP Products)

Target Details

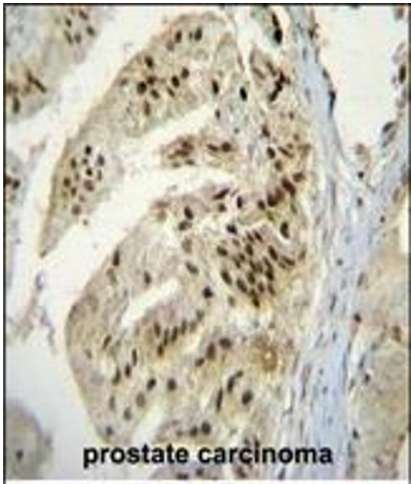
Background:	Polymerase that creates the 3'-poly(A) tail of mRNA's. Also required for the endoribonucleolytic cleavage reaction at some polyadenylation sites. May acquire specificity through interaction with a cleavage and polyadenylation specificity factor (CPSF) at its C-terminus.
Molecular Weight:	82843
Gene ID:	10914
NCBI Accession:	NP_001238935 , NP_001238936 , NP_116021
UniProt:	P51003
Pathways:	Synaptic Membrane , Ribonucleoside Biosynthetic Process

Application Details

Application Notes:	WB: 1:1000. IHC-P: 1:50~100
Restrictions:	For Research Use only

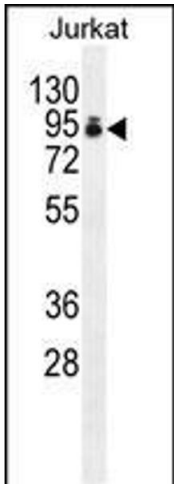
Handling

Format:	Liquid
Buffer:	Purified polyclonal antibody supplied in PBS with 0.09 % (W/V) sodium azide.
Preservative:	Sodium azide
Precaution of Use:	This product contains Sodium azide: a POISONOUS AND HAZARDOUS SUBSTANCE which should be handled by trained staff only.
Storage:	4 °C,-20 °C
Storage Comment:	Maintain refrigerated at 2-8 °C for up to 6 months. For long term storage store at -20 °C in small aliquots to prevent freeze-thaw cycles.
Expiry Date:	6 months



Immunohistochemistry (Paraffin-embedded Sections)

Image 1. P Antibody (Center) (ABIN655637 and ABIN2845116) immunohistochemistry analysis in formalin fixed and raffin embedded human prostate carcinoma followed by peroxidase conjugation of the secondary antibody and DAB staining.This data demonstrates the use of P Antibody (Center) for immunohistochemistry. Clinical relevance has not been evaluated.



Western Blotting

Image 2. P Antibody (Center) (ABIN655637 and ABIN2845116) western blot analysis in Jurkat cell line lysates (35 µg/lane).This demonstrates the P antibody detected the P protein (arrow).