



[Go to Product page](#)

Datasheet for ABIN655641

anti-ATG16L2 antibody (AA 277-304)

2 Images

1 Publication

Overview

Quantity:	400 µL
Target:	ATG16L2
Binding Specificity:	AA 277-304
Reactivity:	Human
Host:	Rabbit
Clonality:	Polyclonal
Conjugate:	This ATG16L2 antibody is un-conjugated
Application:	Western Blotting (WB), Immunohistochemistry (Paraffin-embedded Sections) (IHC (p))

Product Details

Immunogen:	This ATG16L2 antibody is generated from rabbits immunized with a KLH conjugated synthetic peptide between 277-304 amino acids from the Central region of human ATG16L2.
Clone:	RB19556
Isotype:	Ig Fraction
Predicted Reactivity:	M
Purification:	This antibody is purified through a protein A column, followed by peptide affinity purification.

Target Details

Target:	ATG16L2
Alternative Name:	ATG16L2 (ATG16L2 Products)

Target Details

Background: ATG16L2 may play a role in autophagy (By similarity).

Molecular Weight: 68998

Gene ID: 89849

NCBI Accession: [NP_203746](#)

UniProt: [Q8NAA4](#)

Application Details

Application Notes: WB: 1:1000. IHC-P: 1:50~100

Restrictions: For Research Use only

Handling

Format: Liquid

Buffer: Purified polyclonal antibody supplied in PBS with 0.09 % (W/V) sodium azide.

Preservative: Sodium azide

Precaution of Use: This product contains Sodium azide: a POISONOUS AND HAZARDOUS SUBSTANCE which should be handled by trained staff only.

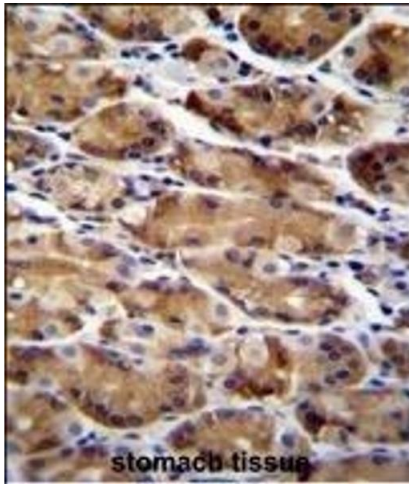
Storage: 4 °C,-20 °C

Storage Comment: Maintain refrigerated at 2-8 °C for up to 6 months. For long term storage store at -20 °C in small aliquots to prevent freeze-thaw cycles.

Expiry Date: 6 months

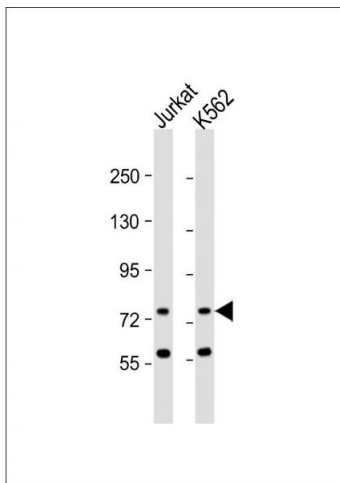
Publications

Product cited in: Bingel, Koeneke, Ridinger, Bittmann, Sill, Peterziel, Wrobel, Rettig, Milde, Fernekorn, Weise, Schober, Witt, Oehme: "Three-dimensional tumor cell growth stimulates autophagic flux and recapitulates chemotherapy resistance." in: **Cell death & disease**, Vol. 8, Issue 8, pp. e3013, (2018) ([PubMed](#)).



Immunohistochemistry (Paraffin-embedded Sections)

Image 1. ATG16L2 Antibody (Center) (ABIN655641 and ABIN2845118) immunohistochemistry analysis in formalin fixed and paraffin embedded human stomach tissue followed by peroxidase conjugation of the secondary antibody and DAB staining. This data demonstrates the use of ATG16L2 Antibody (Center) for immunohistochemistry. Clinical relevance has not been evaluated.



Western Blotting

Image 2. All lanes : Anti-ATG16L2 Antibody (Center) at 1:1000 dilution Lane 1: Jurkat whole cell lysate Lane 2: K562 whole cell lysate Lysates/proteins at 20 µg per lane. Secondary Goat Anti-Rabbit IgG, (H+L), Peroxidase conjugated at 1/10000 dilution. Predicted band size : 69 kDa Blocking/Dilution buffer: 5 % NFDN/TBST.