

Datasheet for ABIN655656  
**anti-MEF2D antibody (N-Term)**[Go to Product page](#)

## 1 Image

## Overview

Quantity:	400 µL
Target:	MEF2D
Binding Specificity:	AA 108-136, N-Term
Reactivity:	Human
Host:	Rabbit
Clonality:	Polyclonal
Conjugate:	This MEF2D antibody is un-conjugated
Application:	Western Blotting (WB)

## Product Details

Immunogen:	This MEF2D antibody is generated from rabbits immunized with a KLH conjugated synthetic peptide between 108-136 amino acids from the N-terminal region of human MEF2D.
Clone:	RB20842
Isotype:	Ig Fraction
Purification:	This antibody is purified through a protein A column, followed by peptide affinity purification.

## Target Details

Target:	MEF2D
Alternative Name:	MEF2D ( <a href="#">MEF2D Products</a> )
Background:	Transcriptional activator which binds specifically to the MEF2 element, 5'-YTA[AT](4)TAR-3',

## Target Details

found in numerous muscle-specific, growth factor-and stress-induced genes. Mediates cellular functions not only in skeletal and cardiac muscle development, but also in neuronal differentiation and survival. Plays diverse roles in the control of cell growth, survival and apoptosis via p38 MAPK signaling in muscle-specific and/or growth factor-related transcription. Plays a critical role in the regulation of neuronal apoptosis (By similarity).

Molecular Weight: 55938

Gene ID: 4209

NCBI Accession: [NP\\_001258558](#), [NP\\_005911](#)

UniProt: [Q14814](#)

## Application Details

Application Notes: WB: 1:1000

Restrictions: For Research Use only

## Handling

Format: Liquid

Buffer: Purified polyclonal antibody supplied in PBS with 0.09 % (W/V) sodium azide.

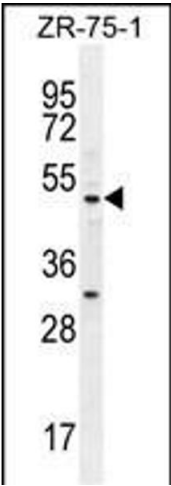
Preservative: Sodium azide

Precaution of Use: This product contains Sodium azide: a POISONOUS AND HAZARDOUS SUBSTANCE which should be handled by trained staff only.

Storage: 4 °C,-20 °C

Storage Comment: Maintain refrigerated at 2-8 °C for up to 6 months. For long term storage store at -20 °C in small aliquots to prevent freeze-thaw cycles.

Expiry Date: 6 months



Western Blotting

**Image 1.** MEF2D Antibody (N-term) (ABIN655656 and ABIN2845129) western blot analysis in ZR-75-1 cell line lysates (35 µg/lane). This demonstrates the MEF2D antibody detected the MEF2D protein (arrow).