



[Go to Product page](#)

Datasheet for ABIN655659  
**anti-TMEM100 antibody (C-Term)**

3 Images

Overview

Quantity:	400 µL
Target:	TMEM100
Binding Specificity:	AA 93-122, C-Term
Reactivity:	Human
Host:	Rabbit
Clonality:	Polyclonal
Conjugate:	This TMEM100 antibody is un-conjugated
Application:	Western Blotting (WB), Flow Cytometry (FACS), Immunohistochemistry (Paraffin-embedded Sections) (IHC (p))

Product Details

Immunogen:	This TMEM100 antibody is generated from rabbits immunized with a KLH conjugated synthetic peptide between 93-122 amino acids from the C-terminal region of human TMEM100.
Clone:	RB28973
Isotype:	Ig Fraction
Predicted Reactivity:	B
Purification:	This antibody is purified through a protein A column, followed by peptide affinity purification.

Target Details

Target:	TMEM100
---------	---------

## Target Details

---

Alternative Name: TMEM100 ([TMEM100 Products](#))

Molecular Weight: 14386

Gene ID: 55273

NCBI Accession: [NP\\_001093110](#), [NP\\_060756](#)

UniProt: [Q9NV29](#)

## Application Details

---

Application Notes: WB: 1:2000. IHC-P: 1:50~100. FC: 1:10~50

Restrictions: For Research Use only

## Handling

---

Format: Liquid

Buffer: Purified polyclonal antibody supplied in PBS with 0.09 % (W/V) sodium azide.

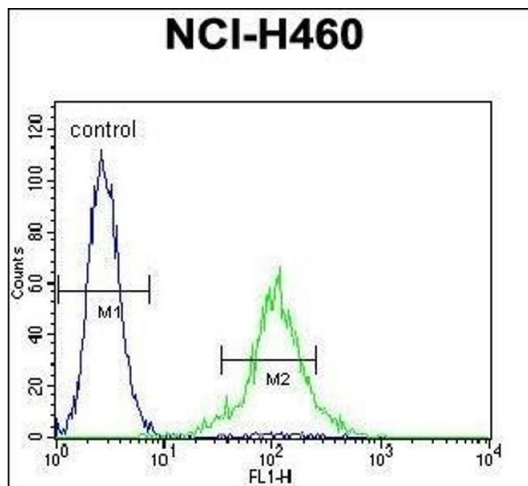
Preservative: Sodium azide

Precaution of Use: This product contains Sodium azide: a POISONOUS AND HAZARDOUS SUBSTANCE which should be handled by trained staff only.

Storage: 4 °C, -20 °C

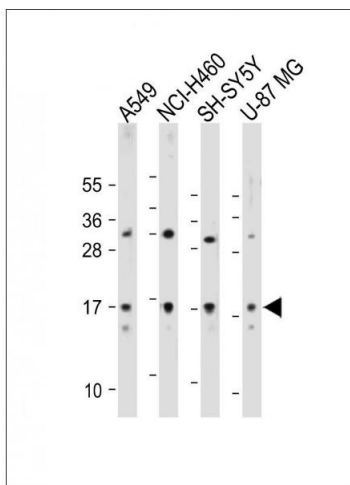
Storage Comment: Maintain refrigerated at 2-8 °C for up to 6 months. For long term storage store at -20 °C in small aliquots to prevent freeze-thaw cycles.

Expiry Date: 6 months



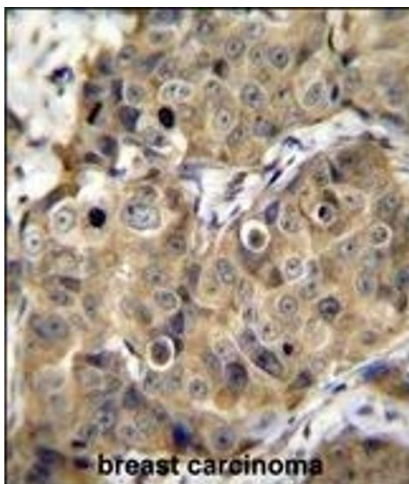
### Flow Cytometry

**Image 1.** TME Antibody (C-term) 11713b flow cytometric analysis of NCI- cells (right histogram) compared to a negative control cell (left histogram). FITC-conjugated goat-anti-rabbit secondary antibodies were used for the analysis.



### Western Blotting

**Image 2.** All lanes : Anti-TME Antibody (C-term) at 1:2000 dilution Lane 1: A549 whole cell lysate Lane 2: NCI- whole cell lysate Lane 3: SH-SY5Y whole cell lysate Lane 4: U-87 MG whole cell lysate Lysates/proteins at 20 µg per lane. Secondary Goat Anti-Rabbit IgG, (H+L), Peroxidase conjugated at 1/10000 dilution. Predicted band size : 14 kDa Blocking/Dilution buffer: 5 % NFDN/TBST.



### Immunohistochemistry (Paraffin-embedded Sections)

**Image 3.** TME Antibody (C-term) (ABIN655659 and ABIN2845131) immunohistochemistry analysis in formalin fixed and paraffin embedded human breast carcinoma followed by peroxidase conjugation of the secondary antibody and DAB staining. This data demonstrates the use of TME Antibody (C-term) for immunohistochemistry. Clinical relevance has not been evaluated.