



[Go to Product page](#)

Datasheet for ABIN655660
anti-CELF6 antibody (N-Term)

2 Images

Overview

Quantity:	400 µL
Target:	CELF6
Binding Specificity:	AA 46-74, N-Term
Reactivity:	Human, Mouse
Host:	Rabbit
Clonality:	Polyclonal
Conjugate:	This CELF6 antibody is un-conjugated
Application:	Western Blotting (WB), Immunohistochemistry (Paraffin-embedded Sections) (IHC (p))

Product Details

Immunogen:	This BRUNOL6 antibody is generated from rabbits immunized with a KLH conjugated synthetic peptide between 46-74 amino acids from the N-terminal region of human BRUNOL6.
Clone:	RB28976
Isotype:	Ig Fraction
Purification:	This antibody is purified through a protein A column, followed by peptide affinity purification.

Target Details

Target:	CELF6
Alternative Name:	BRUNOL6 (CELF6 Products)
Background:	Members of the CELF/BRUNOL protein family contain two N-terminal RNA recognition motif

Target Details

(RRM) domains, one C-terminal RRM domain, and a divergent segment of 160-230 aa between the second and third RRM domains. Members of this protein family regulate pre-mRNA alternative splicing and may also be involved in mRNA editing, and translation. Multiple alternatively spliced transcript variants encoding different isoforms have been identified in this gene.

Molecular Weight: 50477

Gene ID: 60677

NCBI Accession: [NP_001166155](#), [NP_001166156](#), [NP_443072](#)

UniProt: [Q96J87](#)

Application Details

Application Notes: WB: 1:1000. IHC-P: 1:50~100

Restrictions: For Research Use only

Handling

Format: Liquid

Buffer: Purified polyclonal antibody supplied in PBS with 0.09 % (W/V) sodium azide.

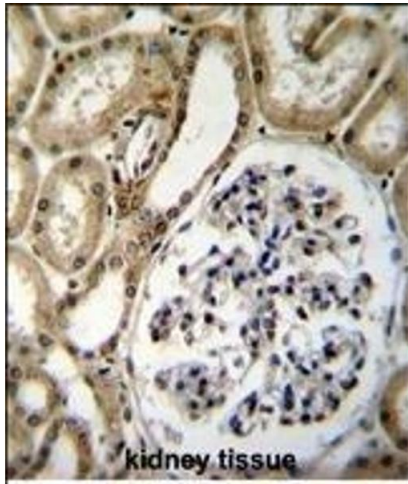
Preservative: Sodium azide

Precaution of Use: This product contains Sodium azide: a POISONOUS AND HAZARDOUS SUBSTANCE which should be handled by trained staff only.

Storage: 4 °C,-20 °C

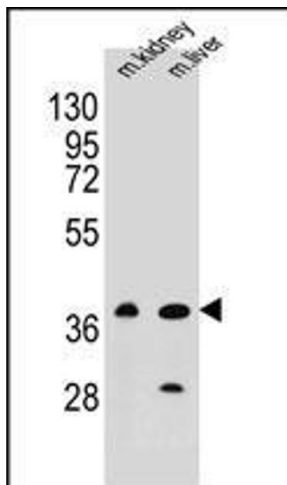
Storage Comment: Maintain refrigerated at 2-8 °C for up to 6 months. For long term storage store at -20 °C in small aliquots to prevent freeze-thaw cycles.

Expiry Date: 6 months



Immunohistochemistry (Paraffin-embedded Sections)

Image 1. BRUNOL6 Antibody (N-term) (ABIN655660 and ABIN2845132) immunohistochemistry analysis in formalin fixed and paraffin embedded human kidney tissue followed by peroxidase conjugation of the secondary antibody and DAB staining. This data demonstrates the use of BRUNOL6 Antibody (N-term) for immunohistochemistry. Clinical relevance has not been evaluated.



Western Blotting

Image 2. BRUNOL6 Antibody (N-term) (ABIN655660 and ABIN2845132) western blot analysis in mouse kidney, liver tissue lysates (35 µg/lane). This demonstrates the BRUNOL6 antibody detected the BRUNOL6 protein (arrow).