



[Go to Product page](#)

Datasheet for ABIN655662

## anti-SMTNL2 antibody (N-Term)

### 1 Image

#### Overview

Quantity:	400 µL
Target:	SMTNL2
Binding Specificity:	AA 21-48, N-Term
Reactivity:	Mouse
Host:	Rabbit
Clonality:	Polyclonal
Conjugate:	This SMTNL2 antibody is un-conjugated
Application:	Western Blotting (WB)

#### Product Details

Immunogen:	This SMTNL2 antibody is generated from rabbits immunized with a KLH conjugated synthetic peptide between 21-48 amino acids from the N-terminal region of human SMTNL2.
Clone:	RB29222
Isotype:	Ig Fraction
Purification:	This antibody is purified through a protein A column, followed by peptide affinity purification.

#### Target Details

Target:	SMTNL2
Alternative Name:	SMTNL2 ( <a href="#">SMTNL2 Products</a> )
Molecular Weight:	50196

## Target Details

Gene ID:	342527
NCBI Accession:	<a href="#">NP_001108446</a> , <a href="#">NP_940903</a>
UniProt:	<a href="#">Q2TAL5</a>

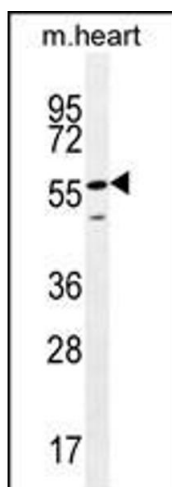
## Application Details

Application Notes:	WB: 1:1000
Restrictions:	For Research Use only

## Handling

Format:	Liquid
Buffer:	Purified polyclonal antibody supplied in PBS with 0.09 % (W/V) sodium azide.
Preservative:	Sodium azide
Precaution of Use:	This product contains Sodium azide: a POISONOUS AND HAZARDOUS SUBSTANCE which should be handled by trained staff only.
Storage:	4 °C,-20 °C
Storage Comment:	Maintain refrigerated at 2-8 °C for up to 6 months. For long term storage store at -20 °C in small aliquots to prevent freeze-thaw cycles.
Expiry Date:	6 months

## Images



### Western Blotting

**Image 1.** SMTNL2 Antibody (N-term) (ABIN655662 and ABIN2845134) western blot analysis in mouse heart tissue lysates (35 µg/lane). This demonstrates the SMTNL2 antibody detected the SMTNL2 protein (arrow).