



[Go to Product page](#)

Datasheet for ABIN655670
anti-TTC6 antibody (C-Term)

1 Image

Overview

| | |
|----------------------|-------------------------------------|
| Quantity: | 400 µL |
| Target: | TTC6 |
| Binding Specificity: | AA 410-438, C-Term |
| Reactivity: | Human |
| Host: | Rabbit |
| Clonality: | Polyclonal |
| Conjugate: | This TTC6 antibody is un-conjugated |
| Application: | Western Blotting (WB) |

Product Details

| | |
|---------------|--|
| Immunogen: | This TTC6 antibody is generated from rabbits immunized with a KLH conjugated synthetic peptide between 410-438 amino acids from the C-terminal region of human TTC6. |
| Clone: | RB29378 |
| Isotype: | Ig Fraction |
| Purification: | This antibody is purified through a protein A column, followed by peptide affinity purification. |

Target Details

| | |
|-------------------|--|
| Target: | TTC6 |
| Alternative Name: | TTC6 (TTC6 Products) |
| Molecular Weight: | 59379 |

Target Details

Gene ID: 319089

UniProt: [Q86TZ1](#)

Application Details

Application Notes: WB: 1:1000

Restrictions: For Research Use only

Handling

Format: Liquid

Buffer: Purified polyclonal antibody supplied in PBS with 0.09 % (W/V) sodium azide.

Preservative: Sodium azide

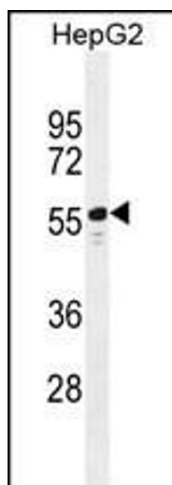
Precaution of Use: This product contains Sodium azide: a POISONOUS AND HAZARDOUS SUBSTANCE which should be handled by trained staff only.

Storage: 4 °C, -20 °C

Storage Comment: Maintain refrigerated at 2-8 °C for up to 6 months. For long term storage store at -20 °C in small aliquots to prevent freeze-thaw cycles.

Expiry Date: 6 months

Images



Western Blotting

Image 1. TTC6 Antibody (C-term) (ABIN655670 and ABIN2845138) western blot analysis in HepG2 cell line lysates (35 µg/lane). This demonstrates the TTC6 antibody detected the TTC6 protein (arrow).