

Datasheet for ABIN655681  
**anti-SRD5A2L2 antibody (C-Term)**[Go to Product page](#)

## 2 Images

## Overview

Quantity:	400 µL
Target:	SRD5A2L2 (TECRL)
Binding Specificity:	AA 325-354, C-Term
Reactivity:	Human
Host:	Rabbit
Clonality:	Polyclonal
Conjugate:	This SRD5A2L2 antibody is un-conjugated
Application:	Western Blotting (WB), Flow Cytometry (FACS)

## Product Details

Immunogen:	This SRD5A2L2 antibody is generated from rabbits immunized with a KLH conjugated synthetic peptide between 325-354 amino acids from the C-terminal region of human SRD5A2L2.
Clone:	RB29568
Isotype:	Ig Fraction
Purification:	This antibody is purified through a protein A column, followed by peptide affinity purification.

## Target Details

Target:	SRD5A2L2 (TECRL)
Alternative Name:	SRD5A2L2 ( <a href="#">TECRL Products</a> )
Molecular Weight:	42009

## Target Details

Gene ID: 253017

NCBI Accession: [NP\\_001010874](#)

UniProt: [Q5HYJ1](#)

## Application Details

Application Notes: WB: 1:1000. FC: 1:10~50

Restrictions: For Research Use only

## Handling

Format: Liquid

Buffer: Purified polyclonal antibody supplied in PBS with 0.09 % (W/V) sodium azide.

Preservative: Sodium azide

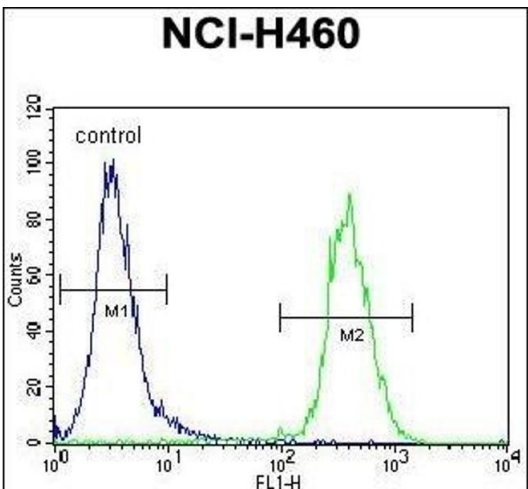
Precaution of Use: This product contains Sodium azide: a POISONOUS AND HAZARDOUS SUBSTANCE which should be handled by trained staff only.

Storage: 4 °C,-20 °C

Storage Comment: Maintain refrigerated at 2-8 °C for up to 6 months. For long term storage store at -20 °C in small aliquots to prevent freeze-thaw cycles.

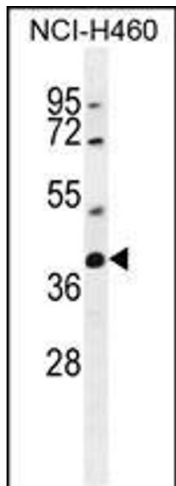
Expiry Date: 6 months

## Images



### Flow Cytometry

**Image 1.** SRD5A2L2 Antibody (C-term) (ABIN655681 and ABIN2845143) flow cytometric analysis of NCI- cells (right histogram) compared to a negative control cell (left histogram). FITC-conjugated goat-anti-rabbit secondary antibodies were used for the analysis.



Western Blotting

**Image 2.** SRD5A2L2 Antibody (C-term) (ABIN655681 and ABIN2845143) western blot analysis in NCI- cell line lysates (35 µg/lane). This demonstrates the SRD5A2L2 antibody detected the SRD5A2L2 protein (arrow).