



[Go to Product page](#)

Datasheet for ABIN655683

anti-TOMM20L antibody (N-Term)

1 Image

Overview

Quantity:	400 µL
Target:	TOMM20L
Binding Specificity:	AA 15-44, N-Term
Reactivity:	Human
Host:	Rabbit
Clonality:	Polyclonal
Conjugate:	This TOMM20L antibody is un-conjugated
Application:	Western Blotting (WB)

Product Details

Immunogen:	This TOMM20L antibody is generated from rabbits immunized with a KLH conjugated synthetic peptide between 15-44 amino acids from the N-terminal region of human TOMM20L.
Clone:	RB29607
Isotype:	Ig Fraction
Purification:	This antibody is purified through a protein A column, followed by peptide affinity purification.

Target Details

Target:	TOMM20L
Alternative Name:	TOMM20L (TOMM20L Products)
Molecular Weight:	17700

Target Details

Gene ID: 387990

NCBI Accession: [NP_997260](#)

UniProt: [Q6UXN7](#)

Application Details

Application Notes: WB: 1:1000

Restrictions: For Research Use only

Handling

Format: Liquid

Buffer: Purified polyclonal antibody supplied in PBS with 0.09 % (W/V) sodium azide.

Preservative: Sodium azide

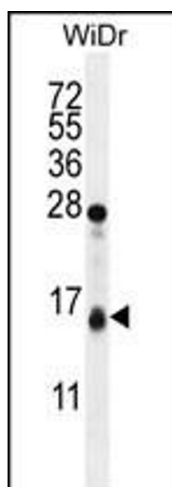
Precaution of Use: This product contains Sodium azide: a POISONOUS AND HAZARDOUS SUBSTANCE which should be handled by trained staff only.

Storage: 4 °C, -20 °C

Storage Comment: Maintain refrigerated at 2-8 °C for up to 6 months. For long term storage store at -20 °C in small aliquots to prevent freeze-thaw cycles.

Expiry Date: 6 months

Images



Western Blotting

Image 1. TOL Antibody (N-term) (ABIN655683 and ABIN2845144) western blot analysis in WiDr cell line lysates (35 µg/lane). This demonstrates the TOL antibody detected the TOL protein (arrow).