

Datasheet for ABIN655699
anti-SPDYE5 antibody (N-Term)[Go to Product page](#)

2 Images

Overview

Quantity:	400 µL
Target:	SPDYE5
Binding Specificity:	AA 21-50, N-Term
Reactivity:	Human
Host:	Rabbit
Clonality:	Polyclonal
Conjugate:	This SPDYE5 antibody is un-conjugated
Application:	Western Blotting (WB), Flow Cytometry (FACS)

Product Details

Immunogen:	This SPDYE5 antibody is generated from rabbits immunized with a KLH conjugated synthetic peptide between 21-50 amino acids from the N-terminal region of human SPDYE5.
Clone:	RB29743
Isotype:	Ig Fraction
Purification:	This antibody is purified through a protein A column, followed by peptide affinity purification.

Target Details

Target:	SPDYE5
Alternative Name:	SPDYE5 (SPDYE5 Products)
Molecular Weight:	47997

Target Details

Gene ID: 442590

NCBI Accession: [NP_001092905](#)

UniProt: [A6NIY4](#)

Application Details

Application Notes: WB: 1:1000. FC: 1:10~50

Restrictions: For Research Use only

Handling

Format: Liquid

Buffer: Purified polyclonal antibody supplied in PBS with 0.09 % (W/V) sodium azide.

Preservative: Sodium azide

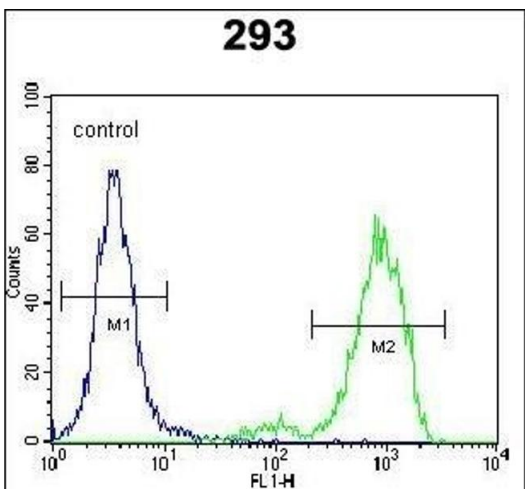
Precaution of Use: This product contains Sodium azide: a POISONOUS AND HAZARDOUS SUBSTANCE which should be handled by trained staff only.

Storage: 4 °C,-20 °C

Storage Comment: Maintain refrigerated at 2-8 °C for up to 6 months. For long term storage store at -20 °C in small aliquots to prevent freeze-thaw cycles.

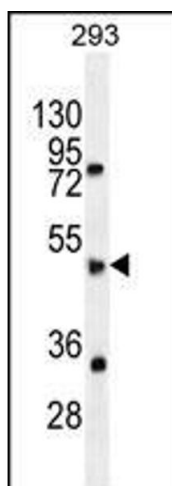
Expiry Date: 6 months

Images



Flow Cytometry

Image 1. SPDYE5 Antibody (N-term) (ABIN655699 and ABIN2845152) flow cytometric analysis of 293 cells (right histogram) compared to a negative control cell (left histogram). FITC-conjugated goat-anti-rabbit secondary antibodies were used for the analysis.



Western Blotting

Image 2. SPDYE5 Antibody (N-term) (ABIN655699 and ABIN2845152) western blot analysis in 293 cell line lysates (35 µg/lane). This demonstrates the SPDYE5 antibody detected the SPDYE5 protein (arrow).