

Datasheet for ABIN655700
anti-LRRC6 antibody (AA 179-207)[Go to Product page](#)

2 Images

Overview

Quantity:	400 µL
Target:	LRRC6
Binding Specificity:	AA 179-207
Reactivity:	Human
Host:	Rabbit
Clonality:	Polyclonal
Conjugate:	This LRRC6 antibody is un-conjugated
Application:	Western Blotting (WB), Flow Cytometry (FACS)

Product Details

Immunogen:	This LRRC6 antibody is generated from rabbits immunized with a KLH conjugated synthetic peptide between 179-207 amino acids from the Central region of human LRRC6.
Clone:	RB29853
Isotype:	Ig Fraction
Predicted Reactivity:	Pr
Purification:	This antibody is purified through a protein A column, followed by peptide affinity purification.

Target Details

Target:	LRRC6
Alternative Name:	LRRC6 (LRRC6 Products)

Target Details

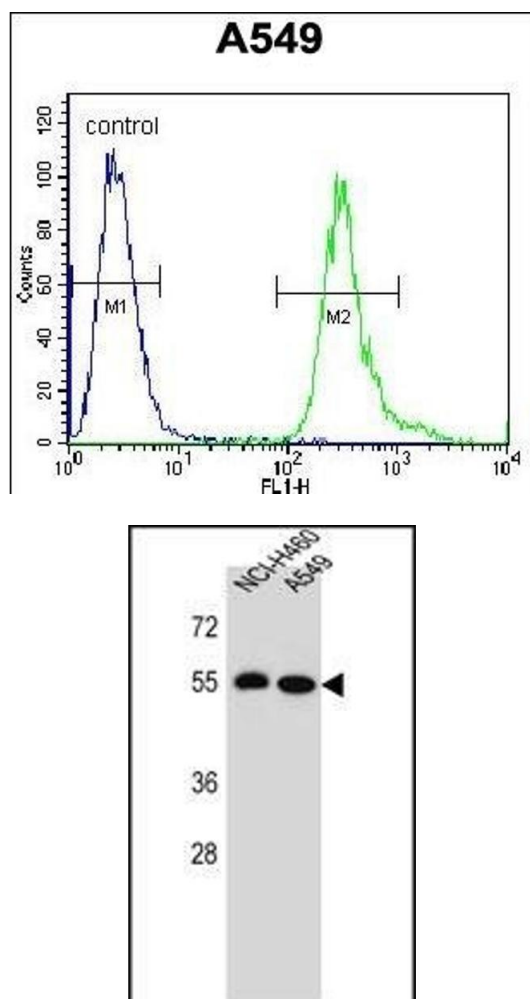
Background:	LRR6 may be involved in spermatocytogenesis or prophase of meiosis (By similarity).
Molecular Weight:	54255
Gene ID:	23639
NCBI Accession:	NP_036604
UniProt:	Q86X45
Pathways:	M Phase

Application Details

Application Notes:	WB: 1:1000. FC: 1:10~50
Restrictions:	For Research Use only

Handling

Format:	Liquid
Buffer:	Purified polyclonal antibody supplied in PBS with 0.09 % (W/V) sodium azide.
Preservative:	Sodium azide
Precaution of Use:	This product contains Sodium azide: a POISONOUS AND HAZARDOUS SUBSTANCE which should be handled by trained staff only.
Storage:	4 °C,-20 °C
Storage Comment:	Maintain refrigerated at 2-8 °C for up to 6 months. For long term storage store at -20 °C in small aliquots to prevent freeze-thaw cycles.
Expiry Date:	6 months



Flow Cytometry

Image 1. LRRC6 Antibody (Center) (ABIN655700 and ABIN2845153) flow cytometric analysis of A549 cells (right histogram) compared to a negative control cell (left histogram). FITC-conjugated goat-anti-rabbit secondary antibodies were used for the analysis.

Western Blotting

Image 2. LRRC6 Antibody (Center) (ABIN655700 and ABIN2845153) western blot analysis in NCI-, A549 cell line lysates (35 μ g/lane). This demonstrates the LRRC6 antibody detected the LRRC6 protein (arrow).