

Datasheet for ABIN655704  
**anti-PALM3 antibody (C-Term)**



[Go to Product page](#)

3 Images

1 Publication

## Overview

Quantity:	400 µL
Target:	PALM3
Binding Specificity:	AA 546-574, C-Term
Reactivity:	Human
Host:	Rabbit
Clonality:	Polyclonal
Conjugate:	This PALM3 antibody is un-conjugated
Application:	Western Blotting (WB), Flow Cytometry (FACS), Immunohistochemistry (Paraffin-embedded Sections) (IHC (p))

## Product Details

Immunogen:	This PALM3 antibody is generated from rabbits immunized with a KLH conjugated synthetic peptide between 546-574 amino acids from the C-terminal region of human PALM3.
Clone:	RB30172
Isotype:	Ig Fraction
Purification:	This antibody is purified through a protein A column, followed by peptide affinity purification.

## Target Details

Target:	PALM3
Alternative Name:	PALM3 ( <a href="#">PALM3 Products</a> )

## Target Details

---

Background: PALM3 is a ATP-binding protein (By similarity).

Molecular Weight: 71695

Gene ID: 342979

NCBI Accession: [NP\\_001138500](#)

UniProt: [A6NDB9](#)

## Application Details

---

Application Notes: WB: 1:1000. IHC-P: 1:10~50. FC: 1:10~50

Restrictions: For Research Use only

## Handling

---

Format: Liquid

Buffer: Purified polyclonal antibody supplied in PBS with 0.09 % (W/V) sodium azide.

Preservative: Sodium azide

Precaution of Use: This product contains Sodium azide: a POISONOUS AND HAZARDOUS SUBSTANCE which should be handled by trained staff only.

Storage: 4 °C,-20 °C

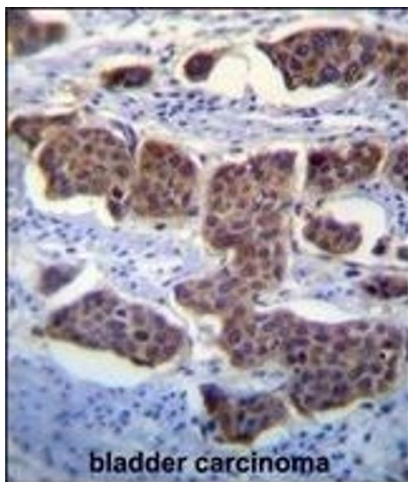
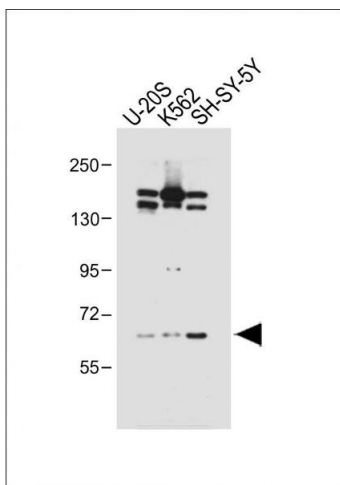
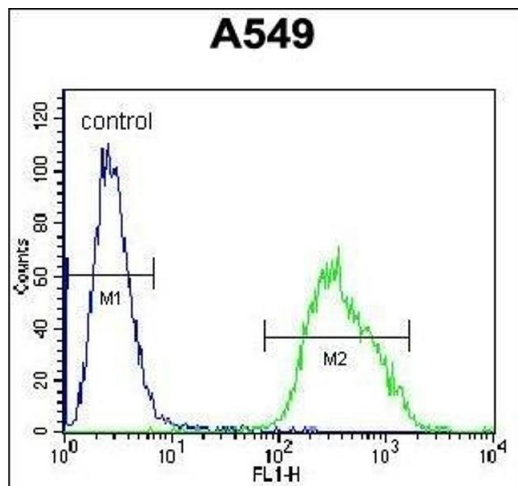
Storage Comment: Maintain refrigerated at 2-8 °C for up to 6 months. For long term storage store at -20 °C in small aliquots to prevent freeze-thaw cycles.

Expiry Date: 6 months

## Publications

---

Product cited in: Wi?niewski, Ostasiewicz, Du?, Zieli?ska, Gnad, Mann: "Extensive quantitative remodeling of the proteome between normal colon tissue and adenocarcinoma." in: **Molecular systems biology**, Vol. 8, pp. 611, (2012) ([PubMed](#)).



### Flow Cytometry

**Image 1.** LM3 Antibody (C-term) (ABIN655704 and ABIN2845155) flow cytometric analysis of A549 cells (right histogram) compared to a negative control cell (left histogram). FITC-conjugated goat-anti-rabbit secondary antibodies were used for the analysis.

### Western Blotting

**Image 2.** All lanes : Anti-LM3 Antibody (C-term) at 1:1000 dilution Lane 1: U-20S whole cell lysate Lane 2: K562 whole cell lysate Lane 3: SH-SY-5Y whole cell lysate Lysates/proteins at 20 µg per lane. Secondary Goat Anti-Rabbit IgG, (H+L), Peroxidase conjugated at 1/10000 dilution. Predicted band size : 72 kDa Blocking/Dilution buffer: 5 % NFDN/TBST.

### Immunohistochemistry (Paraffin-embedded Sections)

**Image 3.** LM3 Antibody (C-term) (ABIN655704 and ABIN2845155) immunohistochemistry analysis in formalin fixed and paraffin embedded human bladder carcinoma followed by peroxidase conjugation of the secondary antibody and DAB staining. This data demonstrates the use of LM3 Antibody (C-term) for immunohistochemistry. Clinical relevance has not been evaluated.