

Datasheet for ABIN655709
anti-SOX1 antibody (N-Term)

2 Images

[Go to Product page](#)

Overview

Quantity:	400 µL
Target:	SOX1
Binding Specificity:	AA 47-76, N-Term
Reactivity:	Human
Host:	Rabbit
Clonality:	Polyclonal
Conjugate:	This SOX1 antibody is un-conjugated
Application:	Western Blotting (WB), Flow Cytometry (FACS)

Product Details

Immunogen:	This SOX1 antibody is generated from rabbits immunized with a KLH conjugated synthetic peptide between 47-76 amino acids from the N-terminal region of human SOX1.
Clone:	RB14348
Isotype:	Ig Fraction
Predicted Reactivity:	X, Zf, C, M, Sh
Purification:	This antibody is prepared by Saturated Ammonium Sulfate (SAS) precipitation followed by dialysis against PBS.

Target Details

Target:	SOX1
---------	------

Target Details

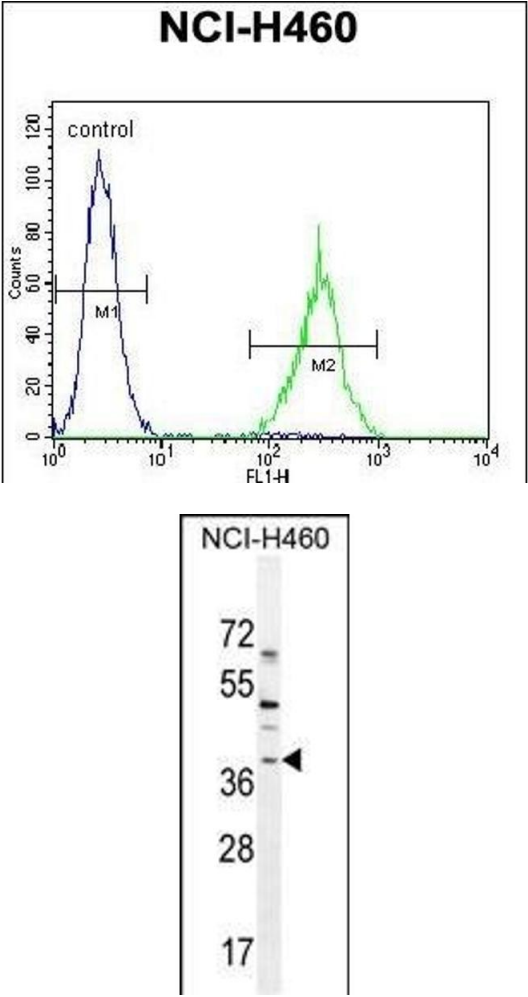
Alternative Name:	SOX1 (SOX1 Products)
Background:	This intronless gene encodes a member of the SOX (SRY-related HMG-box) family of transcription factors involved in the regulation of embryonic development and in the determination of the cell fate. The encoded protein may act as a transcriptional activator after forming a protein complex with other proteins. In mice, a similar protein regulates the gamma-crystallin genes and is essential for lens development.
Gene ID:	6656
NCBI Accession:	NP_005977
UniProt:	O00570

Application Details

Application Notes:	WB: 1:1000. FC: 1:10~50
Restrictions:	For Research Use only

Handling

Format:	Liquid
Buffer:	Purified polyclonal antibody supplied in PBS with 0.09 % (W/V) sodium azide.
Preservative:	Sodium azide
Precaution of Use:	This product contains Sodium azide: a POISONOUS AND HAZARDOUS SUBSTANCE which should be handled by trained staff only.
Storage:	4 °C,-20 °C
Storage Comment:	Maintain refrigerated at 2-8 °C for up to 6 months. For long term storage store at -20 °C in small aliquots to prevent freeze-thaw cycles.
Expiry Date:	6 months



Flow Cytometry

Image 1. SOX1 Antibody (N-term) (ABIN655709 and ABIN2845160) flow cytometric analysis of NCI- cells (right histogram) compared to a negative control cell (left histogram).FITC-conjugated goat-anti-rabbit secondary antibodies were used for the analysis.

Western Blotting

Image 2. SOX1 Antibody (N-term) (ABIN655709 and ABIN2845160) western blot analysis in NCI- cell line lysates (35 µg/lane).This demonstrates the SOX1 antibody detected the SOX1 protein (arrow).