

Datasheet for ABIN655715
anti-PTMA antibody (N-Term)[Go to Product page](#)

3 Images

Overview

Quantity:	400 µL
Target:	PTMA
Binding Specificity:	AA 1-31, N-Term
Reactivity:	Human
Host:	Rabbit
Clonality:	Polyclonal
Conjugate:	This PTMA antibody is un-conjugated
Application:	Western Blotting (WB), Flow Cytometry (FACS), Immunohistochemistry (Paraffin-embedded Sections) (IHC (p))

Product Details

Immunogen:	This PTMA antibody is generated from rabbits immunized with a KLH conjugated synthetic peptide between 1-31 amino acids from the N-terminal region of human PTMA.
Clone:	RB17222
Isotype:	Ig Fraction
Predicted Reactivity:	B, M, Rat
Purification:	This antibody is purified through a protein A column, followed by peptide affinity purification.

Target Details

Target:	PTMA
---------	------

Target Details

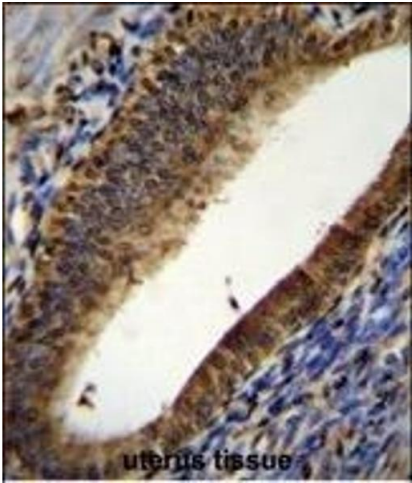
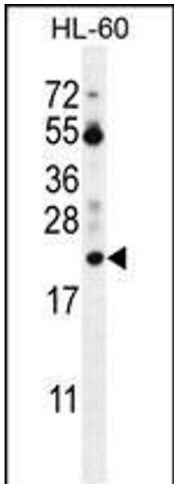
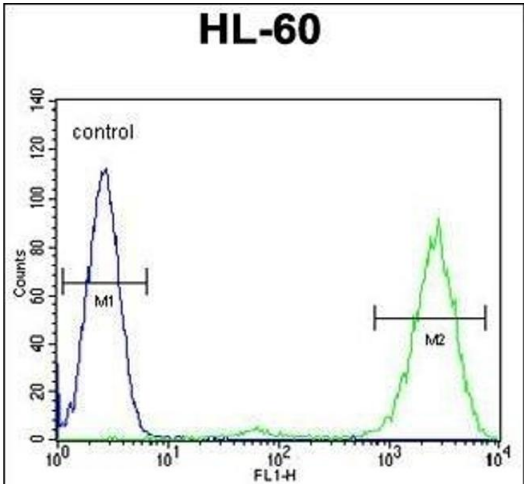
Alternative Name:	PTMA (PTMA Products)
Background:	Prothymosin alpha may mediate immune function by conferring resistance to certain opportunistic infections.
Molecular Weight:	12203
Gene ID:	5757
NCBI Accession:	NP_001092755 , NP_002814
UniProt:	P06454

Application Details

Application Notes:	WB: 1:1000. IHC-P: 1:50~100. FC: 1:10~50
Restrictions:	For Research Use only

Handling

Format:	Liquid
Buffer:	Purified polyclonal antibody supplied in PBS with 0.09 % (W/V) sodium azide.
Preservative:	Sodium azide
Precaution of Use:	This product contains Sodium azide: a POISONOUS AND HAZARDOUS SUBSTANCE which should be handled by trained staff only.
Storage:	4 °C, -20 °C
Storage Comment:	Maintain refrigerated at 2-8 °C for up to 6 months. For long term storage store at -20 °C in small aliquots to prevent freeze-thaw cycles.
Expiry Date:	6 months



Flow Cytometry

Image 1. PT Antibody (N-term) (ABIN655715 and ABIN2845165) flow cytometric analysis of HL-60 cells (right histogram) compared to a negative control cell (left histogram). FITC-conjugated goat-anti-rabbit secondary antibodies were used for the analysis.

Western Blotting

Image 2. PT Antibody (N-term) (ABIN655715 and ABIN2845165) western blot analysis in HL-60 cell line lysates (35 µg/lane). This demonstrates the PT antibody detected the PT protein (arrow).

Immunohistochemistry (Paraffin-embedded Sections)

Image 3. PT Antibody (N-term) (ABIN655715 and ABIN2845165) immunohistochemistry analysis in forlin fixed and paraffin embedded hun uterus tissue followed by peroxidase conjugation of the secondary antibody and DAB staining. This data demonstrates the use of PT Antibody (N-term) for immunohistochemistry. Clinical relevance has not been evaluated.