



[Go to Product page](#)

Datasheet for ABIN655718

anti-**PLEKHA4** antibody (N-Term)

3 Images

Overview

Quantity:	400 µL
Target:	PLEKHA4
Binding Specificity:	AA 21-50, N-Term
Reactivity:	Human
Host:	Rabbit
Clonality:	Polyclonal
Conjugate:	This PLEKHA4 antibody is un-conjugated
Application:	Western Blotting (WB), Flow Cytometry (FACS), Immunohistochemistry (Paraffin-embedded Sections) (IHC (p))

Product Details

Immunogen:	This PLEKHA4 antibody is generated from rabbits immunized with a KLH conjugated synthetic peptide between 21-50 amino acids from the N-terminal region of human PLEKHA4.
Clone:	RB18470
Isotype:	Ig Fraction
Purification:	This antibody is purified through a protein A column, followed by peptide affinity purification.

Target Details

Target:	PLEKHA4
Alternative Name:	PLEKHA4 (PLEKHA4 Products)

Target Details

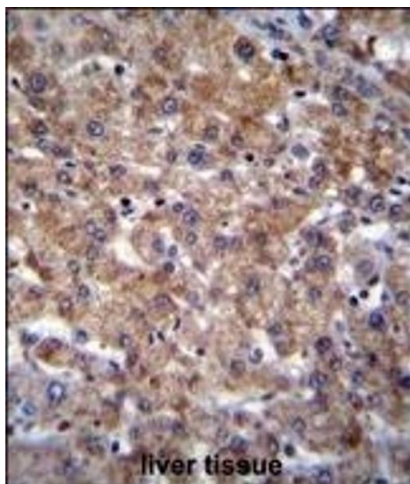
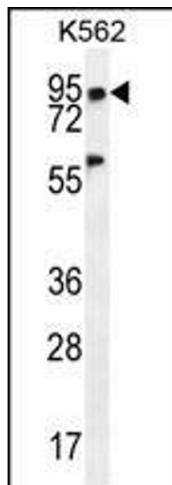
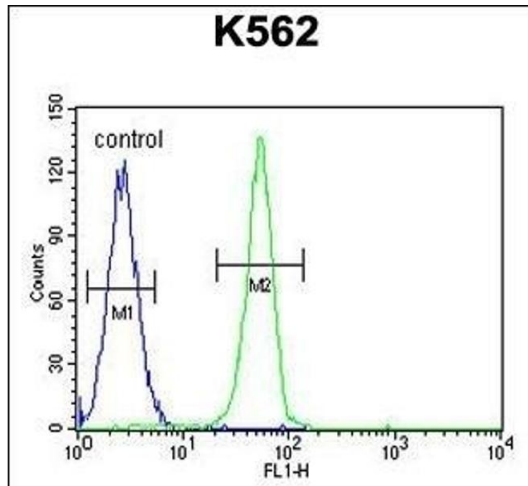
Background:	PLEKHA4 binds specifically to phosphatidylinositol-3-phosphate (PtdIns3P), but not to other phosphoinositides.
Molecular Weight:	85401
Gene ID:	57664
NCBI Accession:	NP_001154826 , NP_065955
UniProt:	Q9H4M7

Application Details

Application Notes:	WB: 1:1000. IHC-P: 1:10~50. FC: 1:10~50
Restrictions:	For Research Use only

Handling

Format:	Liquid
Buffer:	Purified polyclonal antibody supplied in PBS with 0.09 % (W/V) sodium azide.
Preservative:	Sodium azide
Precaution of Use:	This product contains Sodium azide: a POISONOUS AND HAZARDOUS SUBSTANCE which should be handled by trained staff only.
Storage:	4 °C,-20 °C
Storage Comment:	Maintain refrigerated at 2-8 °C for up to 6 months. For long term storage store at -20 °C in small aliquots to prevent freeze-thaw cycles.
Expiry Date:	6 months



Flow Cytometry

Image 1. PLEKHA4 Antibody (N-term) (ABIN655718 and ABIN2845168) flow cytometric analysis of K562 cells (right histogram) compared to a negative control cell (left histogram). FITC-conjugated goat-anti-rabbit secondary antibodies were used for the analysis.

Western Blotting

Image 2. PLEKHA4 Antibody (N-term) (ABIN655718 and ABIN2845168) western blot analysis in K562 cell line lysates (35 µg/lane). This demonstrates the PLEKHA4 antibody detected the PLEKHA4 protein (arrow).

Immunohistochemistry (Paraffin-embedded Sections)

Image 3. PLEKHA4 Antibody (N-term) (ABIN655718 and ABIN2845168) immunohistochemistry analysis in formalin fixed and paraffin embedded human liver tissue followed by peroxidase conjugation of the secondary antibody and DAB staining. This data demonstrates the use of PLEKHA4 Antibody (N-term) for immunohistochemistry. Clinical relevance has not been evaluated.