



[Go to Product page](#)

Datasheet for ABIN655724

## anti-S100A1 antibody (C-Term)

### 2 Images

#### Overview

Quantity:	400 µL
Target:	S100A1
Binding Specificity:	AA 45-75, C-Term
Reactivity:	Human
Host:	Rabbit
Clonality:	Polyclonal
Conjugate:	This S100A1 antibody is un-conjugated
Application:	Western Blotting (WB), Immunohistochemistry (Paraffin-embedded Sections) (IHC (p))

#### Product Details

Immunogen:	This S100A1 antibody is generated from rabbits immunized with a KLH conjugated synthetic peptide between 45-75 amino acids from the C-terminal region of human S100A1.
Clone:	RB19108
Isotype:	Ig Fraction
Predicted Reactivity:	B
Purification:	This antibody is purified through a protein A column, followed by peptide affinity purification.

#### Target Details

Target:	S100A1
Alternative Name:	S100A1 ( <a href="#">S100A1 Products</a> )

## Target Details

---

Background:	The protein encoded by this gene is a member of the S100 family of proteins containing 2 EF-hand calcium-binding motifs. S100 proteins are localized in the cytoplasm and/or nucleus of a wide range of cells, and involved in the regulation of a number of cellular processes such as cell cycle progression and differentiation. S100 genes include at least 13 members which are located as a cluster on chromosome 1q21. This protein may function in stimulation of Ca <sup>2+</sup> -induced Ca <sup>2+</sup> release, inhibition of microtubule assembly, and inhibition of protein kinase C-mediated phosphorylation. Reduced expression of this protein has been implicated in cardiomyopathies.
Molecular Weight:	10546
Gene ID:	6271
NCBI Accession:	<a href="#">NP_006262</a>
UniProt:	<a href="#">P23297</a>
Pathways:	<a href="#">Regulation of Muscle Cell Differentiation, Toll-Like Receptors Cascades, S100 Proteins</a>

## Application Details

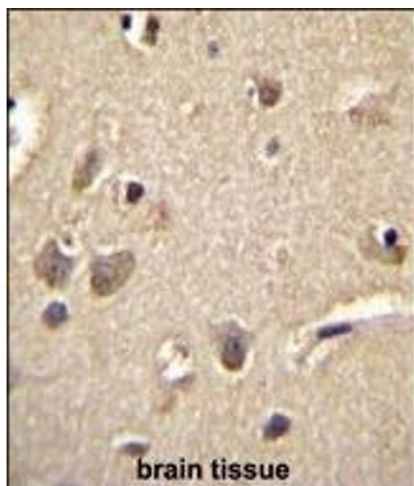
---

Application Notes:	WB: 1:1000. IHC-P: 1:50~100
Restrictions:	For Research Use only

## Handling

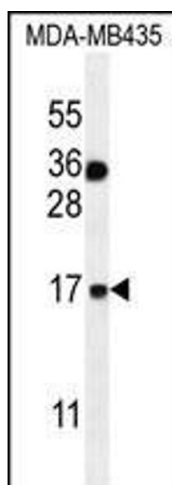
---

Format:	Liquid
Buffer:	Purified polyclonal antibody supplied in PBS with 0.09 % (W/V) sodium azide.
Preservative:	Sodium azide
Precaution of Use:	This product contains Sodium azide: a POISONOUS AND HAZARDOUS SUBSTANCE which should be handled by trained staff only.
Storage:	4 °C, -20 °C
Storage Comment:	Maintain refrigerated at 2-8 °C for up to 6 months. For long term storage store at -20 °C in small aliquots to prevent freeze-thaw cycles.
Expiry Date:	6 months



### Immunohistochemistry (Paraffin-embedded Sections)

**Image 1.** S100A1 Antibody (C-term) (ABIN655724 and ABIN2845172) immunohistochemistry analysis in formalin fixed and paraffin embedded human brain tissue followed by peroxidase conjugation of the secondary antibody and DAB staining. This data demonstrates the use of S100A1 Antibody (C-term) for immunohistochemistry. Clinical relevance has not been evaluated.



### Western Blotting

**Image 2.** S100A1 Antibody (C-term) (ABIN655724 and ABIN2845172) western blot analysis in MDA-M cell line lysates (35 µg/lane). This demonstrates the S100A1 antibody detected the S100A1 protein (arrow).