

Datasheet for ABIN655726
anti-TUBB1 antibody (N-Term)

2 Images

[Go to Product page](#)

Overview

Quantity:	400 µL
Target:	TUBB1
Binding Specificity:	AA 4-31, N-Term
Reactivity:	Human
Host:	Rabbit
Clonality:	Polyclonal
Conjugate:	This TUBB1 antibody is un-conjugated
Application:	Western Blotting (WB), Immunohistochemistry (Paraffin-embedded Sections) (IHC (p))

Product Details

Immunogen:	This TBB1 antibody is generated from rabbits immunized with a KLH conjugated synthetic peptide between 4-31 amino acids from the N-terminal region of human TBB1.
Clone:	RB19133
Isotype:	Ig Fraction
Purification:	This antibody is purified through a protein A column, followed by peptide affinity purification.

Target Details

Target:	TUBB1
Alternative Name:	TBB1 (TUBB1 Products)
Background:	This gene encodes a member of the beta tubulin protein family. Beta tubulins are one of two

Target Details

core protein families (alpha and beta tubulins) that heterodimerize and assemble to form microtubules. This protein is specifically expressed in platelets and megakaryocytes and may be involved in proplatelet production and platelet release. A mutations in this gene is associated with autosomal dominant macrothrombocytopenia. Two pseudogenes of this gene are found on chromosome Y.

Molecular Weight: 50327

Gene ID: 81027

NCBI Accession: [NP_110400](#)

UniProt: [Q9H4B7](#)

Pathways: [Microtubule Dynamics](#)

Application Details

Application Notes: WB: 1:1000. IHC-P: 1:50~100

Restrictions: For Research Use only

Handling

Format: Liquid

Buffer: Purified polyclonal antibody supplied in PBS with 0.09 % (W/V) sodium azide.

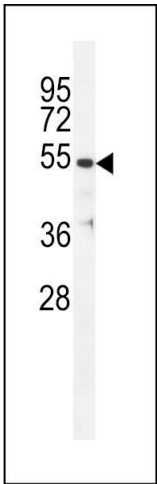
Preservative: Sodium azide

Precaution of Use: This product contains Sodium azide: a POISONOUS AND HAZARDOUS SUBSTANCE which should be handled by trained staff only.

Storage: 4 °C, -20 °C

Storage Comment: Maintain refrigerated at 2-8 °C for up to 6 months. For long term storage store at -20 °C in small aliquots to prevent freeze-thaw cycles.

Expiry Date: 6 months



Immunohistochemistry (Paraffin-embedded Sections)

Image 1. TBB1 Antibody (N-term) (ABIN655726 and ABIN2845173) immunohistochemistry analysis in formalin fixed and paraffin embedded human placenta tissue followed by peroxidase conjugation of the secondary antibody and DAB staining. This data demonstrates the use of TBB1 Antibody (N-term) for immunohistochemistry. Clinical relevance has not been evaluated.

Western Blotting

Image 2. TBB1 Antibody (N-term) (ABIN655726 and ABIN2845173) western blot analysis in ZR-75-1 cell line lysates (35 µg/lane). This demonstrates the TBB1 antibody detected the TBB1 protein (arrow).