

Datasheet for ABIN655733
anti-NUP160 antibody (AA 428-455)[Go to Product page](#)

2 Images

Overview

Quantity:	400 µL
Target:	NUP160
Binding Specificity:	AA 428-455
Reactivity:	Mouse
Host:	Rabbit
Clonality:	Polyclonal
Conjugate:	This NUP160 antibody is un-conjugated
Application:	Western Blotting (WB), Immunohistochemistry (Paraffin-embedded Sections) (IHC (p))

Product Details

Immunogen:	This NUP160 antibody is generated from rabbits immunized with a KLH conjugated synthetic peptide between 428-455 amino acids from the Central region of human NUP160.
Clone:	RB20195
Isotype:	Ig Fraction
Purification:	This antibody is purified through a protein A column, followed by peptide affinity purification.

Target Details

Target:	NUP160
Alternative Name:	NUP160 (NUP160 Products)
Background:	NUP160 is 1 of up to 60 proteins that make up the 120-MD nuclear pore complex, which

Target Details

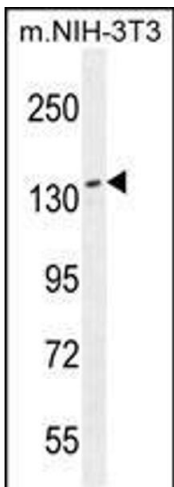
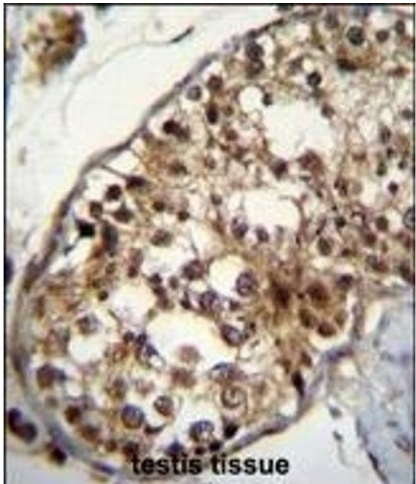
	mediates nucleoplasmic transport.
Molecular Weight:	162121
Gene ID:	23279
NCBI Accession:	NP_056046
UniProt:	Q12769
Pathways:	Protein targeting to Nucleus

Application Details

Application Notes:	WB: 1:1000. IHC-P: 1:50~100
Restrictions:	For Research Use only

Handling

Format:	Liquid
Buffer:	Purified polyclonal antibody supplied in PBS with 0.09 % (W/V) sodium azide.
Preservative:	Sodium azide
Precaution of Use:	This product contains Sodium azide: a POISONOUS AND HAZARDOUS SUBSTANCE which should be handled by trained staff only.
Storage:	4 °C,-20 °C
Storage Comment:	Maintain refrigerated at 2-8 °C for up to 6 months. For long term storage store at -20 °C in small aliquots to prevent freeze-thaw cycles.
Expiry Date:	6 months



Immunohistochemistry (Paraffin-embedded Sections)

Image 1. NU Antibody (Center) (ABIN655733 and ABIN2845180) immunohistochemistry analysis in formalin fixed and paraffin embedded human testis tissue followed by peroxidase conjugation of the secondary antibody and DAB staining. This data demonstrates the use of NU Antibody (Center) for immunohistochemistry. Clinical relevance has not been evaluated.

Western Blotting

Image 2. NU Antibody (Center) (ABIN655733 and ABIN2845180) western blot analysis in mouse NIH-3T3 cell line lysates (35 µg/lane). This demonstrates the NU antibody detected the NU protein (arrow).