



[Go to Product page](#)

Datasheet for ABIN655736
anti-FIP200 antibody (AA 489-515)

1 Image

Overview

Quantity:	400 µL
Target:	FIP200 (RB1CC1)
Binding Specificity:	AA 489-515
Reactivity:	Mouse
Host:	Rabbit
Clonality:	Polyclonal
Conjugate:	This FIP200 antibody is un-conjugated
Application:	Western Blotting (WB)

Product Details

Immunogen:	This RB1CC1 antibody is generated from rabbits immunized with a KLH conjugated synthetic peptide between 489-515 amino acids from the Central region of human RB1CC1.
Clone:	RB20844
Isotype:	Ig Fraction
Purification:	This antibody is purified through a protein A column, followed by peptide affinity purification.

Target Details

Target:	FIP200 (RB1CC1)
Alternative Name:	RB1CC1 (RB1CC1 Products)
Background:	The protein encoded by this gene interacts with signaling pathways to coordinately regulate cell

Target Details

growth, cell proliferation, apoptosis, autophagy, and cell migration. This tumor suppressor also enhances retinoblastoma 1 gene expression in cancer cells. Alternative splicing results in multiple transcript variants encoding distinct isoforms.

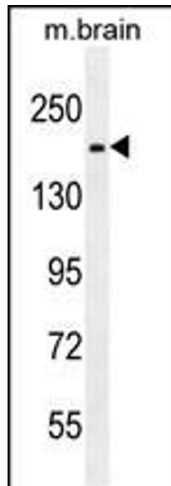
Molecular Weight:	183091
Gene ID:	9821
NCBI Accession:	NP_001077086 , NP_055596
UniProt:	Q8TDY2
Pathways:	Regulation of Cell Size , Autophagy

Application Details

Application Notes:	WB: 1:1000
Restrictions:	For Research Use only

Handling

Format:	Liquid
Buffer:	Purified polyclonal antibody supplied in PBS with 0.09 % (W/V) sodium azide.
Preservative:	Sodium azide
Precaution of Use:	This product contains Sodium azide: a POISONOUS AND HAZARDOUS SUBSTANCE which should be handled by trained staff only.
Storage:	4 °C,-20 °C
Storage Comment:	Maintain refrigerated at 2-8 °C for up to 6 months. For long term storage store at -20 °C in small aliquots to prevent freeze-thaw cycles.
Expiry Date:	6 months



Western Blotting

Image 1. RB1CC1 Antibody (Center) (ABIN655736 and ABIN2845183) western blot analysis in mouse brain tissue lysates (35 µg/lane). This demonstrates the RB1CC1 antibody detected the RB1CC1 protein (arrow).