

Datasheet for ABIN655742  
**anti-SHISA3 antibody (C-Term)**[Go to Product page](#)

## 2 Images

## Overview

Quantity:	400 µL
Target:	SHISA3
Binding Specificity:	AA 158-186, C-Term
Reactivity:	Mouse
Host:	Rabbit
Clonality:	Polyclonal
Conjugate:	This SHISA3 antibody is un-conjugated
Application:	Western Blotting (WB), Immunohistochemistry (Paraffin-embedded Sections) (IHC (p))

## Product Details

Immunogen:	This SHISA3 antibody is generated from rabbits immunized with a KLH conjugated synthetic peptide between 158-186 amino acids from the C-terminal region of human SHISA3.
Clone:	RB29208
Isotype:	Ig Fraction
Purification:	This antibody is purified through a protein A column, followed by peptide affinity purification.

## Target Details

Target:	SHISA3
Alternative Name:	SHISA3 ( <a href="#">SHISA3 Products</a> )
Background:	SHISA3 plays an essential role in the maturation of presomitic mesoderm cells by individual

## Target Details

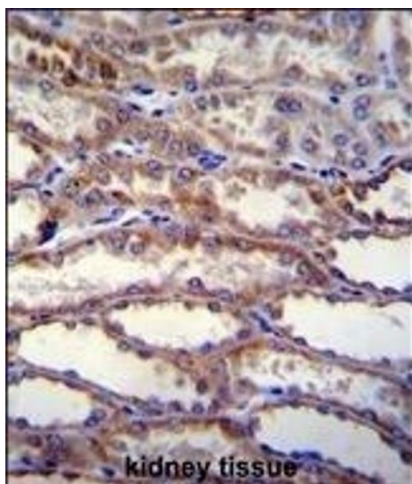
	attenuation of both FGF and WNT signaling (By similarity).
Molecular Weight:	25832
Gene ID:	152573
NCBI Accession:	<a href="#">NP_001073974</a>
UniProt:	<a href="#">A0PJX4</a>

## Application Details

Application Notes:	WB: 1:1000. IHC-P: 1:50~100
Restrictions:	For Research Use only

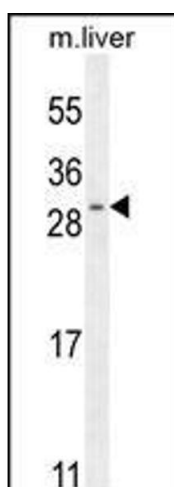
## Handling

Format:	Liquid
Buffer:	Purified polyclonal antibody supplied in PBS with 0.09 % (W/V) sodium azide.
Preservative:	Sodium azide
Precaution of Use:	This product contains Sodium azide: a POISONOUS AND HAZARDOUS SUBSTANCE which should be handled by trained staff only.
Storage:	4 °C,-20 °C
Storage Comment:	Maintain refrigerated at 2-8 °C for up to 6 months. For long term storage store at -20 °C in small aliquots to prevent freeze-thaw cycles.
Expiry Date:	6 months



#### Immunohistochemistry (Paraffin-embedded Sections)

**Image 1.** SHISA3 Antibody (C-term) (ABIN655742 and ABIN2845188) immunohistochemistry analysis in formalin fixed and paraffin embedded human kidney tissue followed by peroxidase conjugation of the secondary antibody and DAB staining. This data demonstrates the use of SHISA3 Antibody (C-term) for immunohistochemistry. Clinical relevance has not been evaluated.



#### Western Blotting

**Image 2.** SHISA3 Antibody (C-term) (ABIN655742 and ABIN2845188) western blot analysis in mouse liver tissue lysates (35 µg/lane). This demonstrates the SHISA3 antibody detected the SHISA3 protein (arrow).