

Datasheet for ABIN655743

**anti-PTPN20A antibody (AA 178-207)**[Go to Product page](#)**3** Images

## Overview

Quantity:	400 µL
Target:	PTPN20A
Binding Specificity:	AA 178-207
Reactivity:	Human
Host:	Rabbit
Clonality:	Polyclonal
Conjugate:	This PTPN20A antibody is un-conjugated
Application:	Western Blotting (WB), Flow Cytometry (FACS), Immunohistochemistry (Paraffin-embedded Sections) (IHC (p))

## Product Details

Immunogen:	This PTPN20A antibody is generated from rabbits immunized with a KLH conjugated synthetic peptide between 178-207 amino acids from the Central region of human PTPN20A.
Clone:	RB29277
Isotype:	Ig Fraction
Purification:	This antibody is purified through a protein A column, followed by peptide affinity purification.

## Target Details

Target:	PTPN20A
Alternative Name:	PTPN20A ( <a href="#">PTPN20A Products</a> )

## Target Details

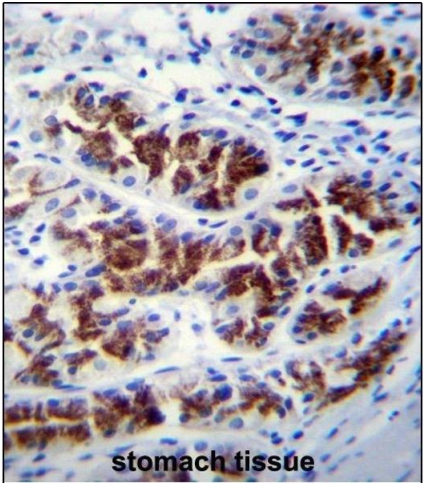
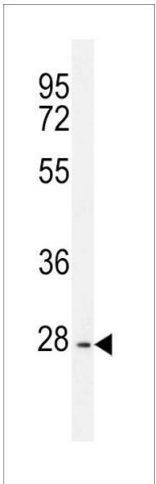
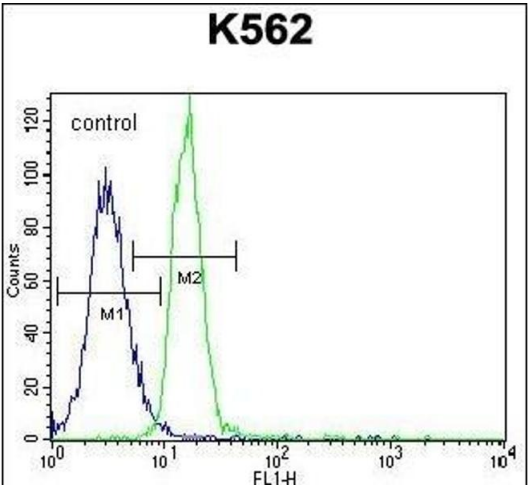
Background:	The product of this gene belongs to the family of classical tyrosine-specific protein tyrosine phosphatases. Many protein tyrosine phosphatases have been shown to regulate fundamental cellular processes and several are mutated in human diseases. Chromosome 10q contains a segmental duplication resulting in multiple copies of the protein tyrosine phosphatase, non-receptor type 20 gene. The two nearly identical copies are designated as PTPN20A and PTPN20B. A third copy is only partially duplicated and contains a pseudogene, designated as PTPN20C. This gene encodes the more telomeric copy, PTPN20B. Multiple alternatively spliced transcript variants encoding different isoforms have been identified.
Molecular Weight:	48423
Gene ID:	26095, 653129
NCBI Accession:	<a href="#">NP_001035816</a> , <a href="#">NP_001035817</a> , <a href="#">NP_001035818</a> , <a href="#">NP_001035819</a> , <a href="#">NP_001035820</a> , <a href="#">NP_001035821</a> , <a href="#">NP_001035822</a> , <a href="#">NP_001035823</a> , <a href="#">NP_001035846</a> , <a href="#">NP_001035848</a> , <a href="#">NP_001035849</a> , <a href="#">NP_001035850</a> , <a href="#">NP_001035851</a> , <a href="#">NP_001035852</a>
UniProt:	<a href="#">Q4JDL3</a>

## Application Details

Application Notes:	WB: 1:1000. IHC-P: 1:10~50. FC: 1:10~50
Restrictions:	For Research Use only

## Handling

Format:	Liquid
Buffer:	Purified polyclonal antibody supplied in PBS with 0.09 % (W/V) sodium azide.
Preservative:	Sodium azide
Precaution of Use:	This product contains Sodium azide: a POISONOUS AND HAZARDOUS SUBSTANCE which should be handled by trained staff only.
Storage:	4 °C,-20 °C
Storage Comment:	Maintain refrigerated at 2-8 °C for up to 6 months. For long term storage store at -20 °C in small aliquots to prevent freeze-thaw cycles.
Expiry Date:	6 months



### Flow Cytometry

**Image 1.** PTPN20A Antibody (Center) (ABIN655743 and ABIN2845189) flow cytometric analysis of K562 cells (right histogram) compared to a negative control cell (left histogram). FITC-conjugated goat-anti-rabbit secondary antibodies were used for the analysis.

### Western Blotting

**Image 2.** PTPN20A Antibody (Center) (ABIN655743 and ABIN2845189) western blot analysis in K562 cell line lysates (35 µg/lane). This demonstrates the PTPN20A antibody detected the PTPN20A protein (arrow).

### Immunohistochemistry (Paraffin-embedded Sections)

**Image 3.** PTPN20A Antibody (Center) (ABIN655743 and ABIN2845189) immunohistochemistry analysis in formalin fixed and paraffin embedded human stomach tissue followed by peroxidase conjugation of the secondary antibody and DAB staining. This data demonstrates the use of PTPN20A Antibody (Center) for immunohistochemistry. Clinical relevance has not been evaluated.