



[Go to Product page](#)

Datasheet for ABIN655744

anti-GOT1L1 antibody (C-Term)

3 Images

Overview

Quantity:	400 µL
Target:	GOT1L1
Binding Specificity:	AA 346-375, C-Term
Reactivity:	Mouse
Host:	Rabbit
Clonality:	Polyclonal
Conjugate:	This GOT1L1 antibody is un-conjugated
Application:	Western Blotting (WB), Immunofluorescence (IF), Immunohistochemistry (Paraffin-embedded Sections) (IHC (p))

Product Details

Immunogen:	This GOT1L1 antibody is generated from rabbits immunized with a KLH conjugated synthetic peptide between 346-375 amino acids from the C-terminal region of human GOT1L1.
Clone:	RB29315
Isotype:	Ig Fraction
Purification:	This antibody is purified through a protein A column, followed by peptide affinity purification.

Target Details

Target:	GOT1L1
Alternative Name:	GOT1L1 (GOT1L1 Products)

Target Details

Molecular Weight:	47305
Gene ID:	137362
NCBI Accession:	NP_689626
UniProt:	Q8NHS2

Application Details

Application Notes:	IF: 1:10~50. WB: 1:1000. IHC-P: 1:50~100
Restrictions:	For Research Use only

Handling

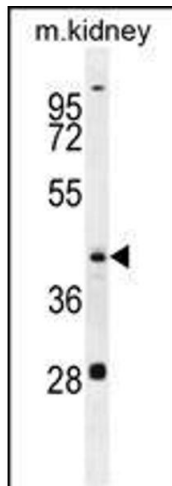
Format:	Liquid
Buffer:	Purified polyclonal antibody supplied in PBS with 0.09 % (W/V) sodium azide.
Preservative:	Sodium azide
Precaution of Use:	This product contains Sodium azide: a POISONOUS AND HAZARDOUS SUBSTANCE which should be handled by trained staff only.
Storage:	4 °C,-20 °C
Storage Comment:	Maintain refrigerated at 2-8 °C for up to 6 months. For long term storage store at -20 °C in small aliquots to prevent freeze-thaw cycles.
Expiry Date:	6 months

Images



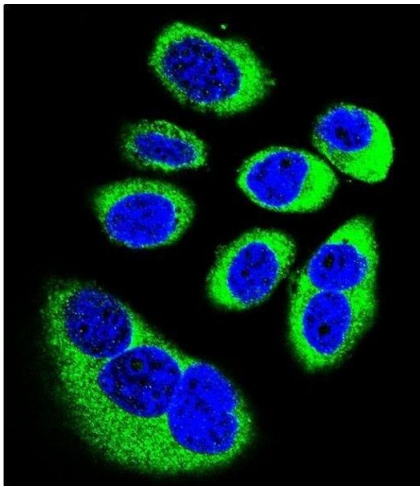
Immunohistochemistry (Paraffin-embedded Sections)

Image 1. GOT1L1 Antibody (C-term) (ABIN655744 and ABIN2845190) immunohistochemistry analysis in formalin fixed and paraffin embedded human brain tissue followed by peroxidase conjugation of the secondary antibody and DAB staining. This data demonstrates the use of GOT1L1 Antibody (C-term) for immunohistochemistry. Clinical relevance has not been evaluated.



Western Blotting

Image 2. GOT1L1 Antibody (C-term) (ABIN655744 and ABIN2845190) western blot analysis in mouse kidney tissue lysates (35 µg/lane). This demonstrates the GOT1L1 antibody detected the GOT1L1 protein (arrow).



Immunofluorescence

Image 3. Confocal immunofluorescent analysis of GOT1L1 Antibody (C-term) (ABIN655744 and ABIN2845190) with U-251MG cell followed by Alexa Fluor 488-conjugated goat anti-rabbit IgG (green). DAPI was used to stain the cell nuclear (blue).