

Datasheet for ABIN655750
anti-NOD1 antibody (C-Term)[Go to Product page](#)

4 Images

Overview

Quantity:	400 µL
Target:	NOD1
Binding Specificity:	AA 923-951, C-Term
Reactivity:	Human, Mouse
Host:	Rabbit
Clonality:	Polyclonal
Conjugate:	This NOD1 antibody is un-conjugated
Application:	Western Blotting (WB), Immunohistochemistry (Paraffin-embedded Sections) (IHC (p))

Product Details

Immunogen:	This NOD1 antibody is generated from rabbits immunized with a KLH conjugated synthetic peptide between 923-951 amino acids from the C-terminal region of human NOD1.
Clone:	RB29527
Isotype:	Ig Fraction
Purification:	This antibody is purified through a protein A column, followed by peptide affinity purification.

Target Details

Target:	NOD1
Alternative Name:	NOD1 (NOD1 Products)
Background:	This gene encodes a member of the NOD (nucleotide-binding oligomerization domain) family.

Target Details

This member is a cytosolic protein. It contains an N-terminal caspase recruitment domain (CARD), a centrally located nucleotide-binding domain (NBD), and 10 tandem leucine-rich repeats (LRRs) in its C terminus. The CARD is involved in apoptotic signaling, LRRs participate in protein-protein interactions, and mutations in the NBD may affect the process of oligomerization and subsequent function of the LRR domain. This protein is an intracellular pattern-recognition receptor (PRR) that initiates inflammation in response to a subset of bacteria through the detection of bacterial diaminopimelic acid. Multiple alternatively spliced transcript variants differing in the 5' UTR have been described, but the full-length nature of these variants has not been determined.

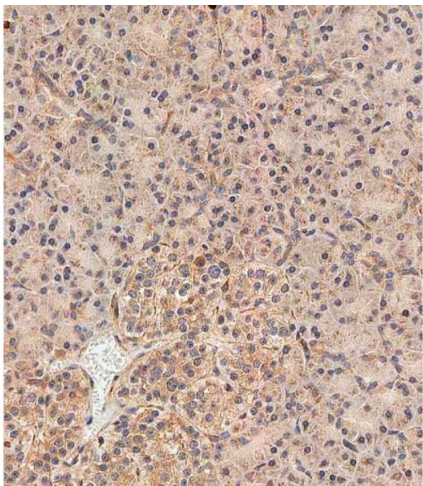
Molecular Weight:	107691
Gene ID:	10392
NCBI Accession:	NP_006083
UniProt:	Q9Y239
Pathways:	Activation of Innate immune Response , Positive Regulation of Endopeptidase Activity , Toll-Like Receptors Cascades , Inflammasome

Application Details

Application Notes:	WB: 1:2000. WB: 1:1000. IHC-P-Leica: 1:500. IHC-P-Leica: 1:500
Restrictions:	For Research Use only

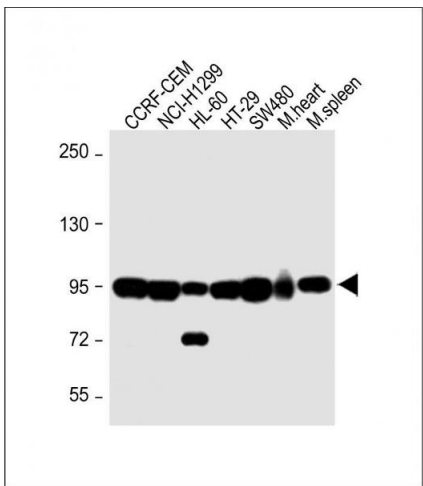
Handling

Format:	Liquid
Buffer:	Purified polyclonal antibody supplied in PBS with 0.09 % (W/V) sodium azide.
Preservative:	Sodium azide
Precaution of Use:	This product contains Sodium azide: a POISONOUS AND HAZARDOUS SUBSTANCE which should be handled by trained staff only.
Storage:	4 °C,-20 °C
Storage Comment:	Maintain refrigerated at 2-8 °C for up to 6 months. For long term storage store at -20 °C in small aliquots to prevent freeze-thaw cycles.
Expiry Date:	6 months



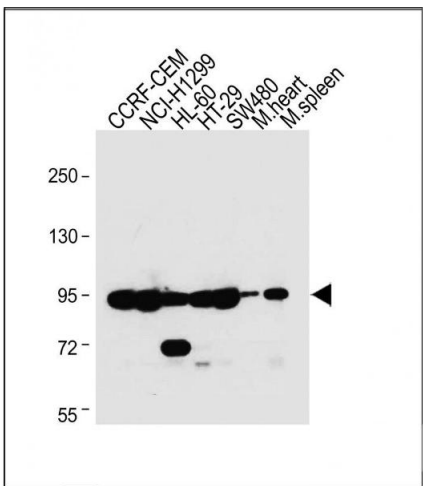
Immunohistochemistry (Paraffin-embedded Sections)

Image 1. Immunohistochemical analysis of paraffin-embedded human pancreas tissue using (ABIN655750 and ABIN2845194) performed on the Leica® BOND RXm. Tissue was fixed with formaldehyde at room temperature, antigen retrieval was by heat mediation with a EDTA buffer (pH 9.0). Samples were incubated with primary Antibody (1:500) for 1 hours at room temperature. A undiluted biotinylated CRF Anti-Polyvalent HRP Polymer antibody was used as the secondary antibody.



Western Blotting

Image 2. All lanes : Anti-NOD1 Antibody (C-term) at 1:1000 dilution Lane 1: CCRF-CEM whole cell lysate Lane 2: NCI-whole cell lysate Lane 3: HL-60 whole cell lysate Lane 4: HT-29 whole cell lysate Lane 5: S whole cell lysate Lane 6: Mouse heart lysate Lane 7: Mouse spleen lysate Lysates/proteins at 20 µg per lane. Secondary Goat Anti-Rabbit IgG, (H+L), Peroxidase conjugated at 1/10000 dilution. Predicted band size : 108 kDa Blocking/Dilution buffer: 5 % NFDM/TBST.



Western Blotting

Image 3. All lanes : Anti-NOD1 Antibody (C-term) at 1:2000 dilution Lane 1: CCRF-CEM whole cell lysate Lane 2: NCI-whole cell lysate Lane 3: HL-60 whole cell lysate Lane 4: HT-29 whole cell lysate Lane 5: S whole cell lysate Lane 6: Mouse heart lysate Lane 7: Mouse spleen lysate Lysates/proteins at 20 µg per lane. Secondary Goat Anti-Rabbit IgG, (H+L), Peroxidase conjugated at 1/10000 dilution. Predicted band size : 108 kDa Blocking/Dilution buffer: 5 % NFDM/TBST.

Please check the [product details page](#) for more images. Overall 4 images are available for ABIN655750.