

Datasheet for ABIN655755  
**anti-ZC3H18 antibody (N-Term)**

## 5 Images

[Go to Product page](#)

## Overview

Quantity:	400 µL
Target:	ZC3H18
Binding Specificity:	AA 2-30, N-Term
Reactivity:	Human, Hamster, Mouse
Host:	Rabbit
Clonality:	Polyclonal
Conjugate:	This ZC3H18 antibody is un-conjugated
Application:	Western Blotting (WB), Flow Cytometry (FACS), Immunofluorescence (IF), Immunohistochemistry (Paraffin-embedded Sections) (IHC (p))

## Product Details

Immunogen:	This DEF antibody is generated from rabbits immunized with a KLH conjugated synthetic peptide between 2-30 amino acids from the N-terminal region of human DEF.
Clone:	RB29591
Isotype:	Ig Fraction
Predicted Reactivity:	Rat
Purification:	This antibody is purified through a protein A column, followed by peptide affinity purification.

## Target Details

Target:	ZC3H18
---------	--------

## Target Details

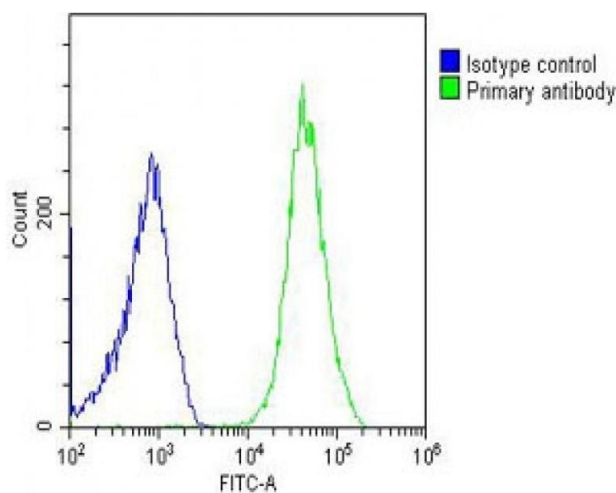
Alternative Name:	DEF ( <a href="#">ZC3H18 Products</a> )
Background:	Regulates the p53 pathway to control the expansion growth of digestive organs (By similarity).
Molecular Weight:	87055
Gene ID:	27042
NCBI Accession:	<a href="#">NP_055203</a>
UniProt:	<a href="#">Q68CQ4</a>
Pathways:	<a href="#">SARS-CoV-2 Protein Interactome</a> , <a href="#">The Global Phosphorylation Landscape of SARS-CoV-2 Infection</a>

## Application Details

Application Notes:	IF: 1:10~50. WB: 1:2000. WB: 1:2000. IHC-P: 1:10~50. FC: 1:25
Restrictions:	For Research Use only

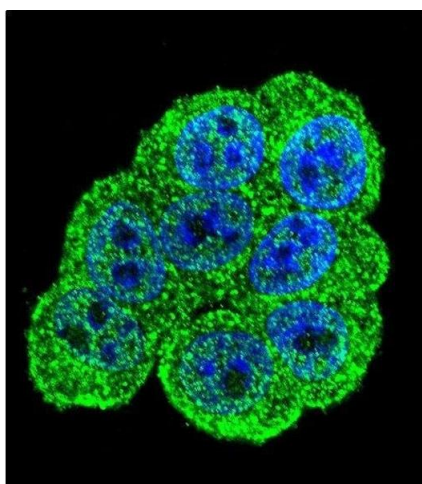
## Handling

Format:	Liquid
Buffer:	Purified polyclonal antibody supplied in PBS with 0.09 % (W/V) sodium azide.
Preservative:	Sodium azide
Precaution of Use:	This product contains Sodium azide: a POISONOUS AND HAZARDOUS SUBSTANCE which should be handled by trained staff only.
Storage:	4 °C,-20 °C
Storage Comment:	Maintain refrigerated at 2-8 °C for up to 6 months. For long term storage store at -20 °C in small aliquots to prevent freeze-thaw cycles.
Expiry Date:	6 months



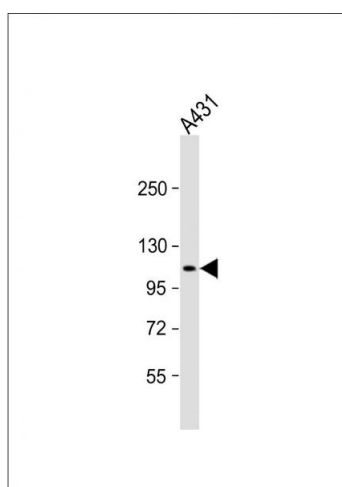
### Flow Cytometry

**Image 1.** Overlay histogram showing U-2OS cells stained with (ABIN655755 and ABIN2845199) (green line). The cells were fixed with 2 % paraformaldehyde (10 min) and then permeabilized with 90 % methanol for 10 min. The cells were then incubated in 2 % bovine serum albumin to block non-specific protein-protein interactions followed by the antibody ((ABIN655755 and ABIN2845199), 1:25 dilution) for 60 min at 37 °C. The secondary antibody used was Goat Anti-Rabbit IgG, DyLight® 488 Conjugated Highly Cross-Adsorbed(OH191631) at 1/200 dilution for 40 min at 37 °C. Isotype control antibody (blue line) was rabbit IgG (1  $\mu$ g/ $1 \times 10^6$  cells) used under the same conditions. Acquisition of >10,000 events was performed.



### Immunofluorescence

**Image 2.** Confocal immunofluorescent analysis of DEF Antibody (N-term) (ABIN655755 and ABIN2845199) with HeLa cells followed by Alexa Fluor 488-conjugated goat anti-rabbit IgG (green). DAPI was used to stain the cell nuclei (blue).



### Western Blotting

**Image 3.** Anti-DEF Antibody (N-term) at 1:2000 dilution + A431 whole cell lysate. Lysates/proteins at 20  $\mu$ g per lane. Secondary Goat Anti-Rabbit IgG, (H+L), Peroxidase conjugated at 1/10000 dilution. Predicted band size : 87 kDa. Blocking/Dilution buffer: 5 % NFDM/TBST.

Please check the [product details page](#) for more images. Overall 5 images are available for ABIN655755.