

Datasheet for ABIN655780
anti-CBLN2 antibody (C-Term)[Go to Product page](#)

2 Images

Overview

Quantity:	400 µL
Target:	CBLN2
Binding Specificity:	AA 179-207, C-Term
Reactivity:	Human, Mouse
Host:	Rabbit
Clonality:	Polyclonal
Conjugate:	This CBLN2 antibody is un-conjugated
Application:	Western Blotting (WB), Immunohistochemistry (Paraffin-embedded Sections) (IHC (p))

Product Details

Immunogen:	This CBLN2 antibody is generated from rabbits immunized with a KLH conjugated synthetic peptide between 179-207 amino acids from the C-terminal region of human CBLN2.
Clone:	RB29841
Isotype:	Ig Fraction
Predicted Reactivity:	Rat
Purification:	This antibody is purified through a protein A column, followed by peptide affinity purification.

Target Details

Target:	CBLN2
Alternative Name:	CBLN2 (CBLN2 Products)

Target Details

Background:	CBLN2, Cerebellin 2, is a secreted glycoprotein and, like Cerebellin 1, may also serve as transneuronal regulators of synaptic functions in various brain regions.
-------------	--

Gene ID:	147381
----------	--------

NCBI Accession:	NP_872317
-----------------	---------------------------

UniProt:	Q8IUK8
----------	------------------------

Application Details

Application Notes:	WB: 1:1000. IHC-P: 1:10~50
--------------------	----------------------------

Restrictions:	For Research Use only
---------------	-----------------------

Handling

Format:	Liquid
---------	--------

Buffer:	Purified polyclonal antibody supplied in PBS with 0.09 % (W/V) sodium azide.
---------	--

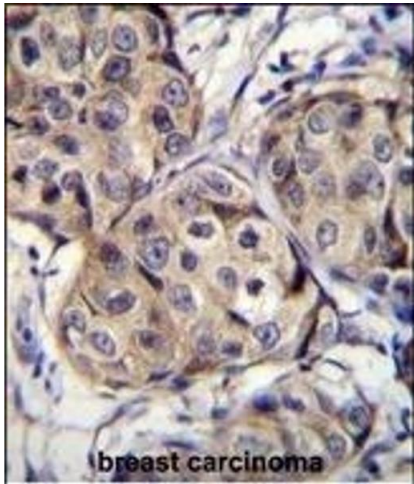
Preservative:	Sodium azide
---------------	--------------

Precaution of Use:	This product contains Sodium azide: a POISONOUS AND HAZARDOUS SUBSTANCE which should be handled by trained staff only.
--------------------	--

Storage:	4 °C, -20 °C
----------	--------------

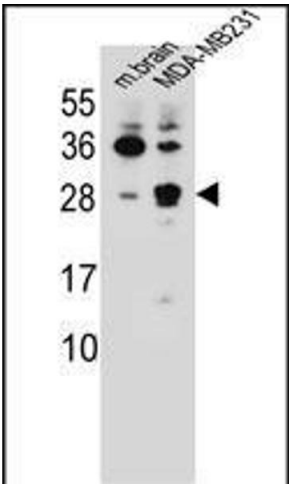
Storage Comment:	Maintain refrigerated at 2-8 °C for up to 6 months. For long term storage store at -20 °C in small aliquots to prevent freeze-thaw cycles.
------------------	--

Expiry Date:	6 months
--------------	----------



Immunohistochemistry (Paraffin-embedded Sections)

Image 1. CBLN2 Antibody (C-term) (ABIN655780 and ABIN2845215) immunohistochemistry analysis in formalin fixed and paraffin embedded human breast carcinoma followed by peroxidase conjugation of the secondary antibody and DAB staining. This data demonstrates the use of CBLN2 Antibody (C-term) for immunohistochemistry. Clinical relevance has not been evaluated.



Western Blotting

Image 2. CBLN2 Antibody (C-term) (ABIN655780 and ABIN2845215) western blot analysis in mouse brain tissue and MDA-M cell line lysates (35 µg/lane). This demonstrates the CBLN2 antibody detected the CBLN2 protein (arrow).