

Datasheet for ABIN655781  
**anti-CTAGE4 antibody (N-Term)**[Go to Product page](#)

## 1 Image

## Overview

|                      |                                       |
|----------------------|---------------------------------------|
| Quantity:            | 400 µL                                |
| Target:              | CTAGE4                                |
| Binding Specificity: | AA 86-114, N-Term                     |
| Reactivity:          | Human                                 |
| Host:                | Rabbit                                |
| Clonality:           | Polyclonal                            |
| Conjugate:           | This CTAGE4 antibody is un-conjugated |
| Application:         | Western Blotting (WB)                 |

## Product Details

|               |   |
|---------------|---|
| Immunogen:    | This CTAGE4 antibody is generated from rabbits immunized with a KLH conjugated synthetic peptide between 86-114 amino acids from the N-terminal region of human CTAGE4. |
| Clone:        | RB29843   |
| Isotype:      | Ig Fraction   |
| Purification: | This antibody is purified through a protein A column, followed by peptide affinity purification.  |

## Target Details

|                   |   |
|-------------------|---|
| Target:           | CTAGE4                                    |
| Alternative Name: | CTGE4 ( <a href="#">CTAGE4 Products</a> ) |
| Background:       | Tumor-associated antigen.                 |

## Target Details

|                   |  |
|-------------------|--|
| Molecular Weight: | 87989  |
| Gene ID:          | 100128553  |
| NCBI Accession:   | <a href="#">NP_001265436</a> , <a href="#">NP_940897</a> |
| UniProt:          | <a href="#">Q8IX94</a>                                   |

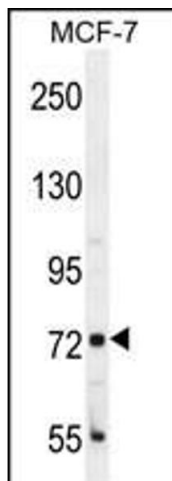
## Application Details

|                    |                       |
|--------------------|-----------------------|
| Application Notes: | WB: 1:1000            |
| Restrictions:      | For Research Use only |

## Handling

|                    |  |
|--------------------|--|
| Format:            | Liquid   |
| Buffer:            | Purified polyclonal antibody supplied in PBS with 0.09 % (W/V) sodium azide.   |
| Preservative:      | Sodium azide   |
| Precaution of Use: | This product contains Sodium azide: a POISONOUS AND HAZARDOUS SUBSTANCE which should be handled by trained staff only.                     |
| Storage:           | 4 °C, -20 °C   |
| Storage Comment:   | Maintain refrigerated at 2-8 °C for up to 6 months. For long term storage store at -20 °C in small aliquots to prevent freeze-thaw cycles. |
| Expiry Date:       | 6 months   |

## Images



### Western Blotting

**Image 1.** CTGE4 Antibody (N-term) (ABIN655781 and ABIN2845216) western blot analysis in MCF-7 cell line lysates (35 µg/lane). This demonstrates the CTGE4 antibody detected the CTGE4 protein (arrow).