

Datasheet for ABIN655791
anti-PDE1B antibody (C-Term)

3 Images

[Go to Product page](#)

Overview

Quantity:	400 µL
Target:	PDE1B
Binding Specificity:	AA 473-500, C-Term
Reactivity:	Human, Mouse
Host:	Rabbit
Clonality:	Polyclonal
Conjugate:	This PDE1B antibody is un-conjugated
Application:	Western Blotting (WB), Immunohistochemistry (Paraffin-embedded Sections) (IHC (p))

Product Details

Immunogen:	This PDE1B antibody is generated from rabbits immunized with a KLH conjugated synthetic peptide between 473-500 amino acids from the C-terminal region of human PDE1B.
Clone:	RB31387
Isotype:	Ig Fraction
Purification:	This antibody is purified through a protein A column, followed by peptide affinity purification.

Target Details

Target:	PDE1B
Alternative Name:	PDE1B (PDE1B Products)
Background:	Cyclic nucleotide phosphodiesterases (PDEs) catalyze hydrolysis of the cyclic nucleotides

Target Details

cAMP and cGMP to the corresponding nucleoside 5-prime-monophosphates. Mammalian PDEs have been classified into several families based on their biochemical properties. Members of the PDE1 family, such as PDE1B, are calmodulin (see MIM 114180)-dependent PDEs (CaM-PDEs) that are stimulated by a calcium-calmodulin complex (Repaske et al., 1992 [PubMed 1326532]).

Molecular Weight: 61380

Gene ID: 5153

NCBI Accession: [NP_000915](#), [NP_001159447](#)

UniProt: [Q01064](#)

Pathways: [Neurotrophin Signaling Pathway](#), [cAMP Metabolic Process](#), [G-protein mediated Events](#), [Interaction of EGFR with phospholipase C-gamma](#)

Application Details

Application Notes: WB: 1:1000. WB: 1:1000. IHC-P: 1:10~50

Restrictions: For Research Use only

Handling

Format: Liquid

Buffer: Purified polyclonal antibody supplied in PBS with 0.09 % (W/V) sodium azide.

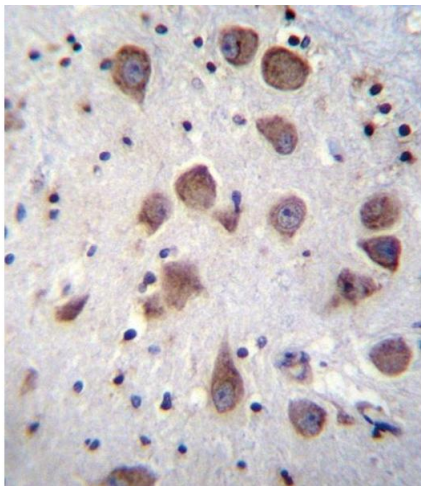
Preservative: Sodium azide

Precaution of Use: This product contains Sodium azide: a POISONOUS AND HAZARDOUS SUBSTANCE which should be handled by trained staff only.

Storage: 4 °C,-20 °C

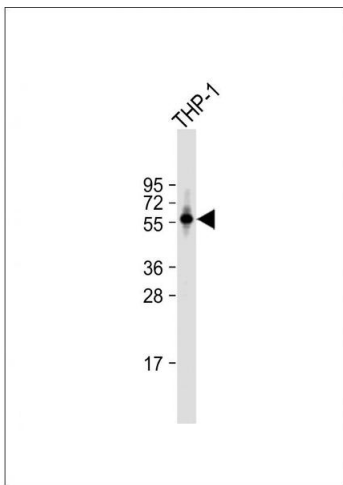
Storage Comment: Maintain refrigerated at 2-8 °C for up to 6 months. For long term storage store at -20 °C in small aliquots to prevent freeze-thaw cycles.

Expiry Date: 6 months



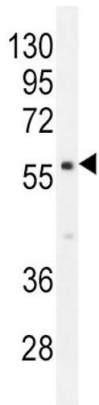
Immunohistochemistry (Paraffin-embedded Sections)

Image 1. PDE1B Antibody (C-term) (ABIN655791 and ABIN2845221) immunohistochemistry analysis in formalin fixed and paraffin embedded human brain tissue followed by peroxidase conjugation of the secondary antibody and DAB staining. This data demonstrates the use of PDE1B Antibody (C-term) for immunohistochemistry. Clinical relevance has not been evaluated.



Western Blotting

Image 2. Anti-PDE1B Antibody (C-term) at 1:1000 dilution + THP-1 whole cell lysate Lysates/proteins at 20 µg per lane. Secondary Goat Anti-Rabbit IgG, (H+L), Peroxidase conjugated at 1/10000 dilution. Predicted band size : 61 kDa Blocking/Dilution buffer: 5 % NFDM/TBST.



Western Blotting

Image 3. PDE1B Antibody (C-term) (ABIN655791 and ABIN2845221) western blot analysis in mouse brain tissue lysates (35 µg/lane). This demonstrates the PDE1B antibody detected the PDE1B protein (arrow).