

Datasheet for ABIN655792
anti-SOCS4 antibody (AA 227-254)[Go to Product page](#)

3 Images

Overview

Quantity:	400 µL
Target:	SOCS4
Binding Specificity:	AA 227-254
Reactivity:	Human
Host:	Rabbit
Clonality:	Polyclonal
Conjugate:	This SOCS4 antibody is un-conjugated
Application:	Western Blotting (WB), Immunofluorescence (IF), Immunohistochemistry (Paraffin-embedded Sections) (IHC (p))

Product Details

Immunogen:	This SOCS4 antibody is generated from rabbits immunized with a KLH conjugated synthetic peptide between 227-254 amino acids from the Central region of human SOCS4.
Clone:	RB31389
Isotype:	Ig Fraction
Purification:	This antibody is purified through a protein A column, followed by peptide affinity purification.

Target Details

Target:	SOCS4
Alternative Name:	SOCS4 (SOCS4 Products)

Target Details

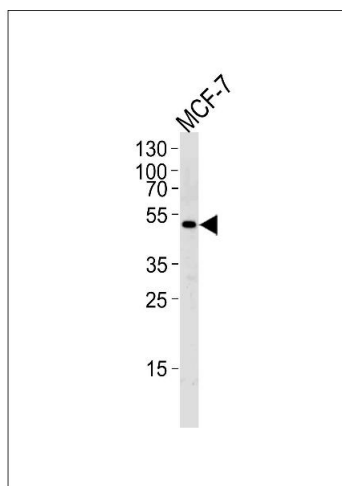
Background:	The protein encoded by this gene contains a SH2 domain and a SOCS BOX domain. The protein thus belongs to the suppressor of cytokine signaling (SOCS), also known as STAT-induced STAT inhibitor (SSI), protein family. SOCS family members are known to be cytokine-inducible negative regulators of cytokine signaling. Two alternatively spliced transcript variants encoding the same protein have been found for this gene.
Molecular Weight:	50623
Gene ID:	122809
NCBI Accession:	NP_543143 , NP_955453
UniProt:	Q8WXH5
Pathways:	JAK-STAT Signaling , EGFR Signaling Pathway

Application Details

Application Notes:	IF: 1:10~50. WB: 1:1000. IHC-P: 1:10~50
Restrictions:	For Research Use only

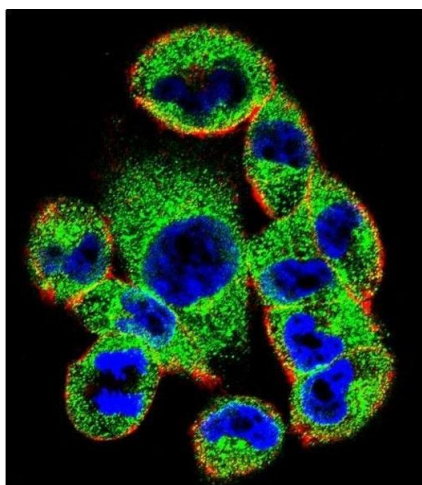
Handling

Format:	Liquid
Buffer:	Purified polyclonal antibody supplied in PBS with 0.09 % (W/V) sodium azide.
Preservative:	Sodium azide
Precaution of Use:	This product contains Sodium azide: a POISONOUS AND HAZARDOUS SUBSTANCE which should be handled by trained staff only.
Storage:	4 °C, -20 °C
Storage Comment:	Maintain refrigerated at 2-8 °C for up to 6 months. For long term storage store at -20 °C in small aliquots to prevent freeze-thaw cycles.
Expiry Date:	6 months



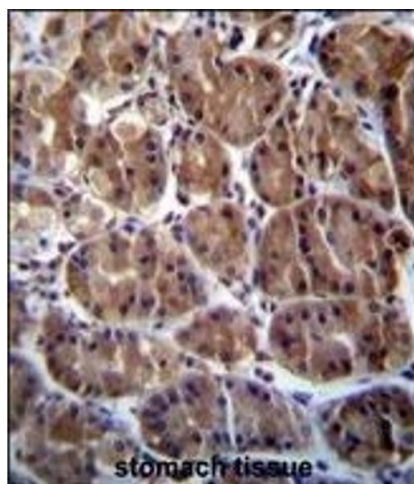
Western Blotting

Image 1. Western blot analysis of lysate from MCF-7 cell line, using SOCS4 Antibody (Center) (ABIN655792 and ABIN2845222). (ABIN655792 and ABIN2845222) was diluted at 1:1000 at each lane. A goat anti-rabbit IgG H&L(HRP) at 1:5000 dilution was used as the secondary antibody. Lysate at 35 µg per lane.



Immunofluorescence

Image 2. Confocal immunofluorescent analysis of SOCS4 Antibody (Center) (ABIN655792 and ABIN2845222) with cell followed by Alexa Fluor 488-conjugated goat anti-rabbit IgG (green). Actin filaments have been labeled with Alexa Fluor 555 phalloidin (red). DAPI was used to stain the cell nuclear (blue).



Immunohistochemistry (Paraffin-embedded Sections)

Image 3. SOCS4 Antibody (Center) (ABIN655792 and ABIN2845222) immunohistochemistry analysis in formalin fixed and paraffin embedded human stomach tissue followed by peroxidase conjugation of the secondary antibody and DAB staining. This data demonstrates the use of SOCS4 Antibody (Center) for immunohistochemistry. Clinical relevance has not been evaluated.