

Datasheet for ABIN655797
anti-PYCR2 antibody (AA 89-116)[Go to Product page](#)

2 Images

Overview

Quantity:	400 µL
Target:	PYCR2
Binding Specificity:	AA 89-116
Reactivity:	Human
Host:	Rabbit
Clonality:	Polyclonal
Conjugate:	This PYCR2 antibody is un-conjugated
Application:	Western Blotting (WB), Immunohistochemistry (Paraffin-embedded Sections) (IHC (p))

Product Details

Immunogen:	This PYCR2 antibody is generated from rabbits immunized with a KLH conjugated synthetic peptide between 89-116 amino acids from the Central region of human PYCR2.
Clone:	RB31401
Isotype:	Ig Fraction
Predicted Reactivity:	B, Pr, M, Rat
Purification:	This antibody is purified through a protein A column, followed by peptide affinity purification.

Target Details

Target:	PYCR2
Alternative Name:	PYCR2 (PYCR2 Products)

Target Details

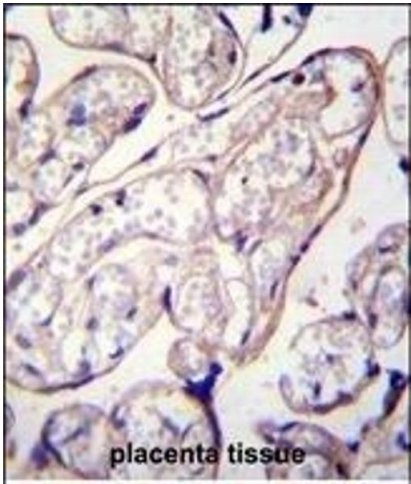
Background:	PYCR2 belongs to the pyrroline-5-carboxylate reductase family. Pyrroline-5-carboxylate reductase catalyzes the the NAD(P)H-dependent conversion of proline to pyrroline-5-carboxylate.
Molecular Weight:	33637
Gene ID:	29920
NCBI Accession:	NP_001258610 , NP_037460
UniProt:	Q96C36

Application Details

Application Notes:	WB: 1:1000. IHC-P: 1:10~50
Restrictions:	For Research Use only

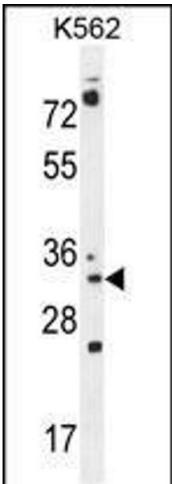
Handling

Format:	Liquid
Buffer:	Purified polyclonal antibody supplied in PBS with 0.09 % (W/V) sodium azide.
Preservative:	Sodium azide
Precaution of Use:	This product contains Sodium azide: a POISONOUS AND HAZARDOUS SUBSTANCE which should be handled by trained staff only.
Storage:	4 °C, -20 °C
Storage Comment:	Maintain refrigerated at 2-8 °C for up to 6 months. For long term storage store at -20 °C in small aliquots to prevent freeze-thaw cycles.
Expiry Date:	6 months



Immunohistochemistry (Paraffin-embedded Sections)

Image 1. PYCR2 Antibody (Center) (ABIN655797 and ABIN2845226) immunohistochemistry analysis in formalin fixed and paraffin embedded human placenta tissue followed by peroxidase conjugation of the secondary antibody and DAB staining. This data demonstrates the use of PYCR2 Antibody (Center) for immunohistochemistry. Clinical relevance has not been evaluated.



Western Blotting

Image 2. PYCR2 Antibody (Center) (ABIN655797 and ABIN2845226) western blot analysis in K562 cell line lysates (35 µg/lane). This demonstrates the PYCR2 antibody detected the PYCR2 protein (arrow).