

Datasheet for ABIN655804
anti-COL8a2 antibody (C-Term)

4 Images

1 Publication

[Go to Product page](#)

Overview

Quantity:	400 µL
Target:	COL8a2 (COL8A2)
Binding Specificity:	AA 571-599, C-Term
Reactivity:	Human, Mouse
Host:	Rabbit
Clonality:	Polyclonal
Conjugate:	This COL8a2 antibody is un-conjugated
Application:	Western Blotting (WB), Immunofluorescence (IF), Immunohistochemistry (Paraffin-embedded Sections) (IHC (p))

Product Details

Immunogen:	This COL8A2 antibody is generated from rabbits immunized with a KLH conjugated synthetic peptide between 571-599 amino acids from the C-terminal region of human COL8A2.
Clone:	RB31742
Isotype:	Ig Fraction
Purification:	This antibody is purified through a protein A column, followed by peptide affinity purification.

Target Details

Target:	COL8a2 (COL8A2)
Alternative Name:	COL8A2 (COL8A2 Products)

Target Details

Background:	This gene encodes the alpha 2 chain of type VIII collagen. The protein is a major component of the basement membrane of the corneal endothelium and forms homo- or heterotrimers with alpha 1 (VIII) type collagens. Defects in this gene are associated with Fuchs endothelial corneal dystrophy and posterior polymorphous corneal dystrophy type 2.
Molecular Weight:	67244
Gene ID:	1296
NCBI Accession:	NP_005193
UniProt:	P25067

Application Details

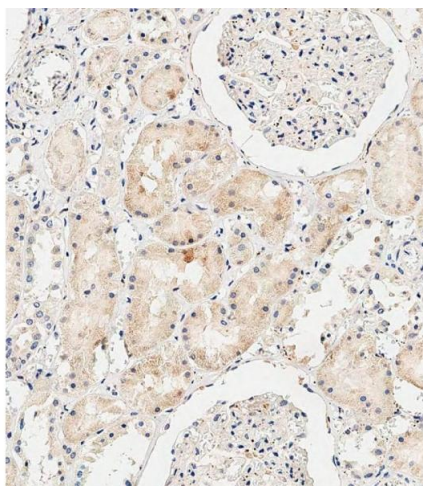
Application Notes:	IF: 1:10~50. WB: 1:2000. IHC-P-Leica: 1:500. IHC-P-Leica: 1:500
Restrictions:	For Research Use only

Handling

Format:	Liquid
Buffer:	Purified polyclonal antibody supplied in PBS with 0.09 % (W/V) sodium azide.
Preservative:	Sodium azide
Precaution of Use:	This product contains Sodium azide: a POISONOUS AND HAZARDOUS SUBSTANCE which should be handled by trained staff only.
Storage:	4 °C,-20 °C
Storage Comment:	Maintain refrigerated at 2-8 °C for up to 6 months. For long term storage store at -20 °C in small aliquots to prevent freeze-thaw cycles.
Expiry Date:	6 months

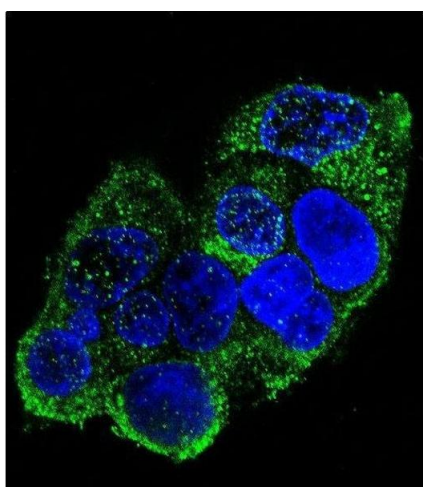
Publications

Product cited in:	Mask, Schoenecker, Kane, Ransom, Bruemmer: "Serum antibody immunoreactivity to equine zona protein after SpayVac vaccination." in: Theriogenology , Vol. 84, Issue 2, pp. 261-7, (2015) (PubMed).
-------------------	--



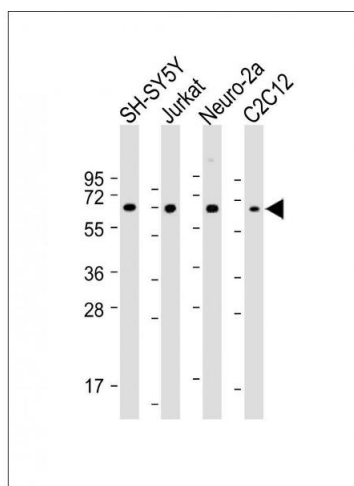
Immunohistochemistry (Paraffin-embedded Sections)

Image 1. Immunohistochemical analysis of paraffin-embedded Human kidney tissue using B performed on the Leica® BOND RXm. Tissue was fixed with formaldehyde at room temperature, antigen retrieval was by heat mediation with a EDTA buffer (pH 9.0). Samples were incubated with primary Antibody (1:500) for 1 hours at room temperature. A undiluted biotinylated CRF Anti-Polyvalent HRP Polymer antibody was used as the secondary antibody.



Immunofluorescence

Image 2. Confocal immunofluorescent analysis of COL8A2 Antibody (C-term) (ABIN655804 and ABIN2845231) with HepG2 cell followed by Alexa Fluor 488-conjugated goat anti-rabbit IgG (green). DAPI was used to stain the cell nuclear (blue).



Western Blotting

Image 3. All lanes : Anti-COL8A2 Antibody (C-term) at 1:2000 dilution Lane 1: SH-SY5Y whole cell lysate Lane 2: Jurkat whole cell lysate Lane 3: Neuro-2a whole cell lysate Lane 4: C2C12 whole cell lysate Lysates/proteins at 20 µg per lane. Secondary Goat Anti-Rabbit IgG, (H+L), Peroxidase conjugated at 1/10000 dilution. Predicted band size : 67 kDa Blocking/Dilution buffer: 5 % NFDm/TBST.

Please check the [product details page](#) for more images. Overall 4 images are available for ABIN655804.