

Datasheet for ABIN655805
anti-IRF1 antibody (AA 74-102)[Go to Product page](#)

1 Image

Overview

Quantity:	400 µL
Target:	IRF1
Binding Specificity:	AA 74-102
Reactivity:	Human
Host:	Rabbit
Clonality:	Polyclonal
Conjugate:	This IRF1 antibody is un-conjugated
Application:	Western Blotting (WB)

Product Details

Immunogen:	This IRF1 antibody is generated from rabbits immunized with a KLH conjugated synthetic peptide between 74-102 amino acids from the Central region of human IRF1.
Clone:	RB31743
Isotype:	Ig Fraction
Predicted Reactivity:	B, M, Pig, Rat
Purification:	This antibody is purified through a protein A column, followed by peptide affinity purification.

Target Details

Target:	IRF1
Alternative Name:	IRF1 (IRF1 Products)

Target Details

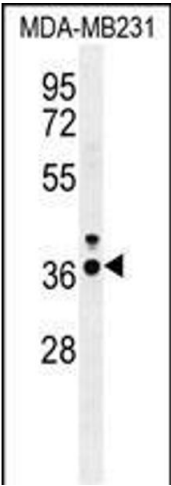
Background:	IRF1 encodes interferon regulatory factor 1, a member of the interferon regulatory transcription factor (IRF) family. IRF1 serves as an activator of interferons alpha and beta transcription, and in mouse it has been shown to be required for double-stranded RNA induction of these genes. IRF1 also functions as a transcription activator of genes induced by interferons alpha, beta, and gamma. Further, IRF1 has been shown to play roles in regulating apoptosis and tumor-suppression.
Molecular Weight:	36502
Gene ID:	3659
NCBI Accession:	NP_002189
UniProt:	P10914
Pathways:	Interferon-gamma Pathway , Response to Growth Hormone Stimulus , Positive Regulation of Immune Effector Process , Hepatitis C , Autophagy

Application Details

Application Notes:	WB: 1:1000
Restrictions:	For Research Use only

Handling

Format:	Liquid
Buffer:	Purified polyclonal antibody supplied in PBS with 0.09 % (W/V) sodium azide.
Preservative:	Sodium azide
Precaution of Use:	This product contains Sodium azide: a POISONOUS AND HAZARDOUS SUBSTANCE which should be handled by trained staff only.
Storage:	4 °C,-20 °C
Storage Comment:	Maintain refrigerated at 2-8 °C for up to 6 months. For long term storage store at -20 °C in small aliquots to prevent freeze-thaw cycles.
Expiry Date:	6 months



Western Blotting

Image 1. IRF1 Antibody (Center) (ABIN655805 and ABIN2845232) western blot analysis in MDA-M cell line lysates (35 µg/lane). This demonstrates the IRF1 antibody detected the IRF1 protein (arrow).