

Datasheet for ABIN655814
anti-BTRC antibody (N-Term)



[Go to Product page](#)

4 Images

Overview

Quantity:	400 µL
Target:	BTRC
Binding Specificity:	AA 17-52, N-Term
Reactivity:	Human
Host:	Rabbit
Clonality:	Polyclonal
Conjugate:	This BTRC antibody is un-conjugated
Application:	Western Blotting (WB), Immunofluorescence (IF), Immunohistochemistry (Paraffin-embedded Sections) (IHC (p))

Product Details

Immunogen:	This BTRC antibody is generated from rabbits immunized with a KLH conjugated synthetic peptide between 17-52 amino acids from the N-terminal region of human BTRC.
Clone:	RB16275
Isotype:	Ig Fraction
Predicted Reactivity:	M
Purification:	This antibody is purified through a protein A column, followed by peptide affinity purification.

Target Details

Target:	BTRC
---------	------

Target Details

Alternative Name:	BRTC1 (BTRC Products)
Background:	<p>This gene encodes a member of the F-box protein family which is characterized by an approximately 40 amino acid motif, the F-box. The F-box proteins constitute one of the four subunits of ubiquitin protein ligase complex called SCFs (SKP1-cullin-F-box), which function in phosphorylation-dependent ubiquitination. The F-box proteins are divided into 3 classes: Fbws containing WD-40 domains, Fbls containing leucine-rich repeats, and Fbxs containing either different protein-protein interaction modules or no recognizable motifs. The protein encoded by this gene belongs to the Fbws class, in addition to an F-box, this protein contains multiple WD-40 repeats. This protein is homologous to Xenopus bTrCP1, yeast Met30, Neurospora Scon2 and Drosophila Slimb proteins. It interacts with HIV-1 Vpu and connects CD4 to the proteolytic machinery. It also associates specifically with phosphorylated IκBα and beta-catenin destruction motifs, probably functioning in multiple transcriptional programs by activating the NF-κB pathway and inhibiting the beta-catenin pathway.</p>
Molecular Weight:	68867
Gene ID:	8945
NCBI Accession:	NP_003930 , NP_378663
UniProt:	Q9Y297
Pathways:	Cell Division Cycle , Hedgehog Signaling

Application Details

Application Notes:	IF: 1:10~50. WB: 1:1000. WB: 1:1000. IHC-P: 1:10~50
Restrictions:	For Research Use only

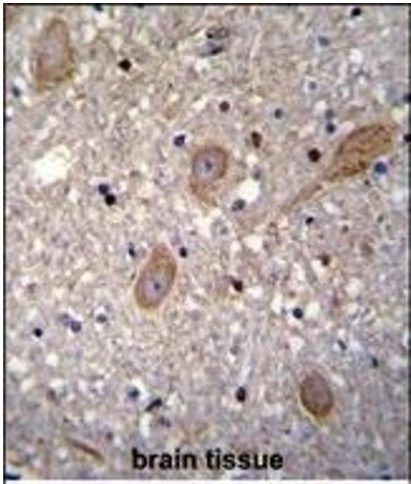
Handling

Format:	Liquid
Buffer:	Purified polyclonal antibody supplied in PBS with 0.09 % (W/V) sodium azide.
Preservative:	Sodium azide
Precaution of Use:	This product contains Sodium azide: a POISONOUS AND HAZARDOUS SUBSTANCE which should be handled by trained staff only.
Storage:	4 °C,-20 °C
Storage Comment:	Maintain refrigerated at 2-8 °C for up to 6 months. For long term storage store at -20 °C in small

aliquots to prevent freeze-thaw cycles.

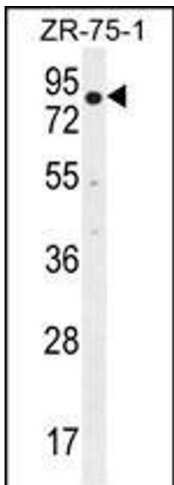
Expiry Date: 6 months

Images



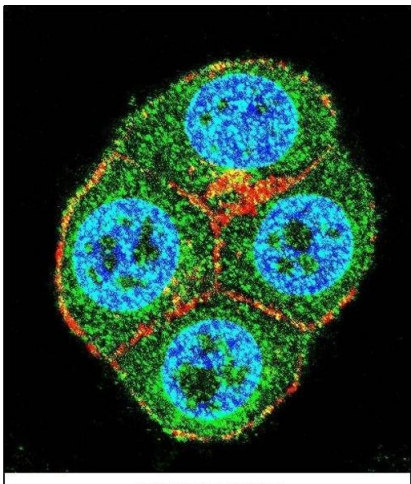
Immunohistochemistry (Paraffin-embedded Sections)

Image 1. BTRC Antibody (N-term) (ABIN655814 and ABIN2845238) immunohistochemistry analysis in formalin fixed and paraffin embedded human brain tissue followed by peroxidase conjugation of the secondary antibody and DAB staining. This data demonstrates the use of BTRC Antibody (N-term) for immunohistochemistry. Clinical relevance has not been evaluated.



Western Blotting

Image 2. BTRC Antibody (N-term) (ABIN655814 and ABIN2845238) western blot analysis in ZR-75-1 cell line lysates (35 µg/lane). This demonstrates the BTRC antibody detected the BTRC protein (arrow).



Immunofluorescence

Image 3. Confocal immunofluorescent analysis of BTRC Antibody (N-term) (ABIN655814 and ABIN2845238) with ZR-75-1 cell followed by Alexa Fluor 488-conjugated goat anti-rabbit IgG (green). Actin filaments have been labeled with Alexa Fluor 555 phalloidin (red). DAPI was used to stain the cell nuclear (blue).

Please check the [product details page](#) for more images. Overall 4 images are available for ABIN655814.