

Datasheet for ABIN655815
anti-PELP1 antibody (AA 744-771)[Go to Product page](#)

4 Images

Overview

Quantity:	400 µL
Target:	PELP1
Binding Specificity:	AA 744-771
Reactivity:	Human, Mouse
Host:	Rabbit
Clonality:	Polyclonal
Conjugate:	This PELP1 antibody is un-conjugated
Application:	Western Blotting (WB), Immunohistochemistry (Paraffin-embedded Sections) (IHC (p))

Product Details

Immunogen:	This PELP1 antibody is generated from rabbits immunized with a KLH conjugated synthetic peptide between 744-771 amino acids from the Central region of human PELP1.
Clone:	RB17558
Isotype:	Ig Fraction
Predicted Reactivity:	Rat
Purification:	This antibody is purified through a protein A column, followed by peptide affinity purification.

Target Details

Target:	PELP1
Alternative Name:	PELP1 (PELP1 Products)

Target Details

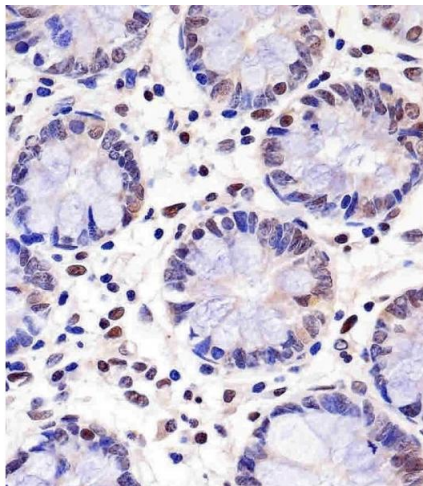
Background:	PELP1 is a coactivator of estrogen receptor (see ESR1, MIM 133430)-mediated transcription and a corepressor of other nuclear hormone receptors and sequence-specific transcription factors (Choi et al., 2004 [PubMed 15456770]).
Molecular Weight:	119700
Gene ID:	27043
NCBI Accession:	NP_001265170 , NP_055204
UniProt:	Q8IZL8

Application Details

Application Notes:	WB: 1:1000. WB: 1:1000. IHC-P: 1:25. IHC-P: 1:25
Restrictions:	For Research Use only

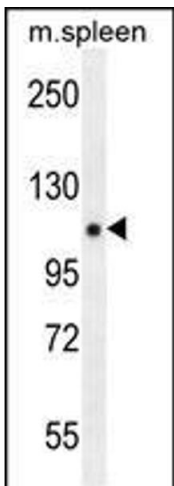
Handling

Format:	Liquid
Buffer:	Purified polyclonal antibody supplied in PBS with 0.09 % (W/V) sodium azide.
Preservative:	Sodium azide
Precaution of Use:	This product contains Sodium azide: a POISONOUS AND HAZARDOUS SUBSTANCE which should be handled by trained staff only.
Storage:	4 °C, -20 °C
Storage Comment:	Maintain refrigerated at 2-8 °C for up to 6 months. For long term storage store at -20 °C in small aliquots to prevent freeze-thaw cycles.
Expiry Date:	6 months



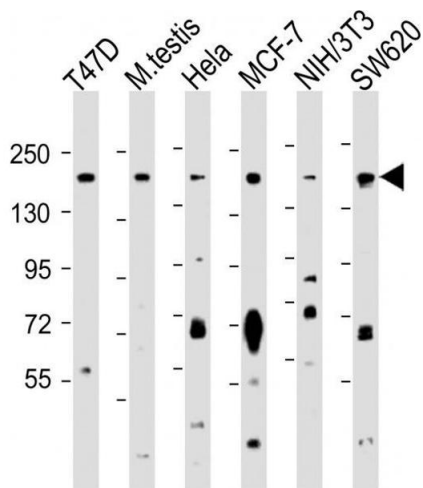
Immunohistochemistry (Paraffin-embedded Sections)

Image 1. C staining PELP1 in human colon tissue sections by Immunohistochemistry (IHC-P - paraformaldehyde-fixed, paraffin-embedded sections). Tissue was fixed with formaldehyde and blocked with 3 % BSA for 0.5 hour at room temperature, antigen retrieval was by heat mediation with a citrate buffer (pH 6). Samples were incubated with primary antibody (1/25) for 1 hours at 37 °C. A undiluted biotinylated goat polyvalent antibody was used as the secondary antibody.



Western Blotting

Image 2. PELP1 Antibody (Center) (ABIN655815 and ABIN2845239) western blot analysis in mouse spleen tissue lysates (35 µg/lane). This demonstrates the PELP1 antibody detected the PELP1 protein (arrow).



Western Blotting

Image 3. All lanes : Anti-PELP1 Antibody (Center) at 1:1000 dilution Lane 1: T47D whole cell lysate Lane 2: mouse testis lysate Lane 3: Hela whole cell lysate Lane 4: MCF-7 whole cell lysate Lane 5: NIH/3T3 whole cell lysate Lane 6: S whole cell lysate Lysates/proteins at 20 µg per lane. Secondary Goat Anti-Rabbit IgG, (H+L), Peroxidase conjugated at 1/10000 dilution. Predicted band size : 120 kDa Blocking/Dilution buffer: 5 % NFDm/TBST.

Please check the [product details page](#) for more images. Overall 4 images are available for ABIN655815.