

Datasheet for ABIN655817  
**anti-MMP1 antibody (AA 317-347)**



[Go to Product page](#)

3 Images

## Overview

Quantity:	400 µL
Target:	MMP1
Binding Specificity:	AA 317-347
Reactivity:	Human
Host:	Rabbit
Clonality:	Polyclonal
Conjugate:	This MMP1 antibody is un-conjugated
Application:	Western Blotting (WB), Immunohistochemistry (Paraffin-embedded Sections) (IHC (p)), Immunofluorescence (IF)

## Product Details

Immunogen:	This MMP1 antibody is generated from rabbits immunized with a KLH conjugated synthetic peptide between 317-347 amino acids from the Central region of human MMP1.
Clone:	RB18908
Isotype:	Ig Fraction
Purification:	This antibody is purified through a protein A column, followed by peptide affinity purification.

## Target Details

Target:	MMP1
Alternative Name:	MMP1 ( <a href="#">MMP1 Products</a> )

## Target Details

---

**Background:** Proteins of the matrix metalloproteinase (MMP) family are involved in the breakdown of extracellular matrix in normal physiological processes, such as embryonic development, reproduction, and tissue remodeling, as well as in disease processes, such as arthritis and metastasis. Most MMP's are secreted as inactive proproteins which are activated when cleaved by extracellular proteinases. This gene encodes a secreted enzyme which breaks down the interstitial collagens, types I, II, and III. The gene is part of a cluster of MMP genes which localize to chromosome 11q22.3. Alternative splicing results in multiple transcript variants.

---

**Molecular Weight:** 54007

---

**Gene ID:** 4312

---

**NCBI Accession:** [NP\\_002412](#)

---

**UniProt:** [P03956](#)

## Application Details

---

**Application Notes:** IF: 1:10~50. WB: 1:1000. IHC-P: 1:50~100

---

**Restrictions:** For Research Use only

## Handling

---

**Format:** Liquid

---

**Buffer:** Purified polyclonal antibody supplied in PBS with 0.09 % (W/V) sodium azide.

---

**Preservative:** Sodium azide

---

**Precaution of Use:** This product contains Sodium azide: a POISONOUS AND HAZARDOUS SUBSTANCE which should be handled by trained staff only.

---

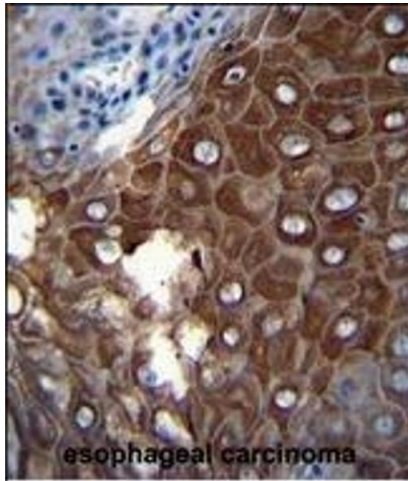
**Storage:** 4 °C,-20 °C

---

**Storage Comment:** Maintain refrigerated at 2-8 °C for up to 6 months. For long term storage store at -20 °C in small aliquots to prevent freeze-thaw cycles.

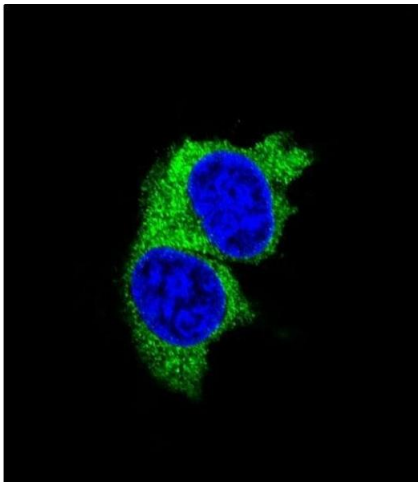
---

**Expiry Date:** 6 months



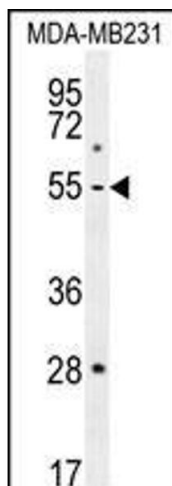
### Immunohistochemistry (Paraffin-embedded Sections)

**Image 1.** P1 Antibody (Center) (ABIN655817 and ABIN2845241) immunohistochemistry analysis in formalin fixed and paraffin embedded human esophageal carcinoma followed by peroxidase conjugation of the secondary antibody and DAB staining. This data demonstrates the use of P1 Antibody (Center) for immunohistochemistry. Clinical relevance has not been evaluated.



### Immunofluorescence

**Image 2.** Confocal immunofluorescent analysis of P1 Antibody (Center) (ABIN655817 and ABIN2845241) with MDA-MB231 cell followed by Alexa Fluor 488-conjugated goat anti-rabbit IgG (green). DAPI was used to stain the cell nuclear (blue).



### Western Blotting

**Image 3.** P1 Antibody (Center) (ABIN655817 and ABIN2845241) western blot analysis in MDA-MB231 cell line lysates (35 µg/lane). This demonstrates the P1 antibody detected the P1 protein (arrow).