

Datasheet for ABIN655821  
**anti-GPM6B antibody (N-Term)**[Go to Product page](#)

## 2 Images

## Overview

Quantity:	400 µL
Target:	GPM6B
Binding Specificity:	AA 1-30, N-Term
Reactivity:	Human
Host:	Rabbit
Clonality:	Polyclonal
Conjugate:	This GPM6B antibody is un-conjugated
Application:	Flow Cytometry (FACS), Western Blotting (WB)

## Product Details

Immunogen:	This GPM6B antibody is generated from rabbits immunized with a KLH conjugated synthetic peptide between 1-30 amino acids from the N-terminal region of human GPM6B.
Clone:	RB20077
Isotype:	Ig Fraction
Predicted Reactivity:	Rat
Purification:	This antibody is purified through a protein A column, followed by peptide affinity purification.

## Target Details

Target:	GPM6B
Alternative Name:	GPM6B ( <a href="#">GPM6B Products</a> )

## Target Details

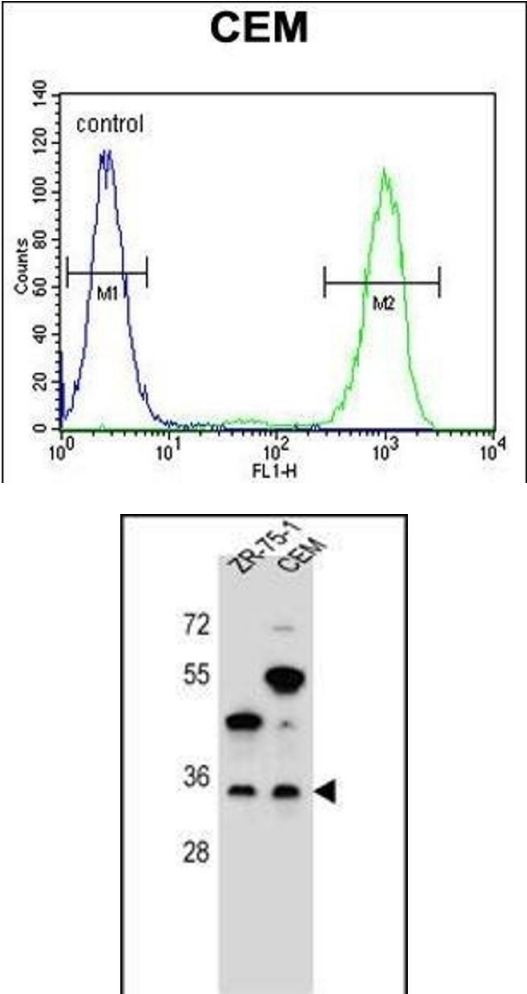
Background:	This gene encodes a membrane glycoprotein that belongs to the proteolipid protein family. Proteolipid protein family members are expressed in most brain regions and are thought to be involved in cellular housekeeping functions, such as membrane trafficking and cell-to-cell communication.
Molecular Weight:	28989
Gene ID:	2824
NCBI Accession:	<a href="#">NP_001001994</a> , <a href="#">NP_001001995</a> , <a href="#">NP_001001996</a> , <a href="#">NP_005269</a>
UniProt:	<a href="#">Q13491</a>

## Application Details

Application Notes:	WB: 1:1000. FC: 1:10~50
Restrictions:	For Research Use only

## Handling

Format:	Liquid
Buffer:	Purified polyclonal antibody supplied in PBS with 0.09 % (W/V) sodium azide.
Preservative:	Sodium azide
Precaution of Use:	This product contains Sodium azide: a POISONOUS AND HAZARDOUS SUBSTANCE which should be handled by trained staff only.
Storage:	4 °C,-20 °C
Storage Comment:	Maintain refrigerated at 2-8 °C for up to 6 months. For long term storage store at -20 °C in small aliquots to prevent freeze-thaw cycles.
Expiry Date:	6 months



### Flow Cytometry

**Image 1.** GB Antibody (N-term) (ABIN655821 and ABIN2845245) flow cytometric analysis of CEM cells (right histogram) compared to a negative control cell (left histogram). FITC-conjugated goat-anti-rabbit secondary antibodies were used for the analysis.

### Western Blotting

**Image 2.** GB Antibody (N-term) (ABIN655821 and ABIN2845245) western blot analysis in ZR-75-1, CEM cell line lysates (35 µg/lane). This demonstrates the GB antibody detected the GB protein (arrow).