

Datasheet for ABIN655830
anti-RMD1 antibody (N-Term)

3 Images

[Go to Product page](#)

Overview

Quantity:	400 µL
Target:	RMD1
Binding Specificity:	AA 76-104, N-Term
Reactivity:	Human, Mouse
Host:	Rabbit
Clonality:	Polyclonal
Conjugate:	This RMD1 antibody is un-conjugated
Application:	Western Blotting (WB), Immunohistochemistry (Paraffin-embedded Sections) (IHC (p))

Product Details

Immunogen:	This RMD1 antibody is generated from rabbits immunized with a KLH conjugated synthetic peptide between 76-104 amino acids from the N-terminal region of human RMD1.
Clone:	RB29532
Isotype:	Ig Fraction
Predicted Reactivity:	B, Rat
Purification:	This antibody is purified through a protein A column, followed by peptide affinity purification.

Target Details

Target:	RMD1
Alternative Name:	RMD1 (RMD1 Products)

Target Details

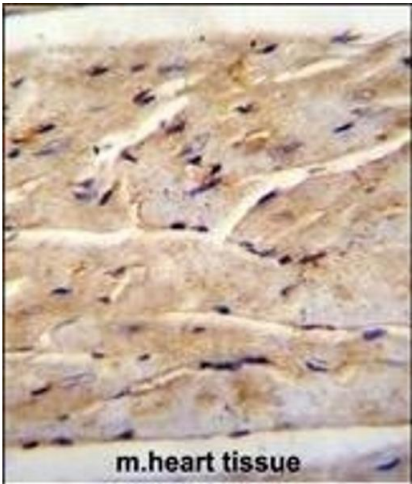
Background:	FAM82B belongs to the FAM82/RMD family and contains two TPR repeats. The specific function of FAM82B is not yet known.
Molecular Weight:	35808
Gene ID:	51115
NCBI Accession:	NP_057117
UniProt:	Q96DB5

Application Details

Application Notes:	WB: 1:1000. WB: 1:1000. IHC-P: 1:10~50
Restrictions:	For Research Use only

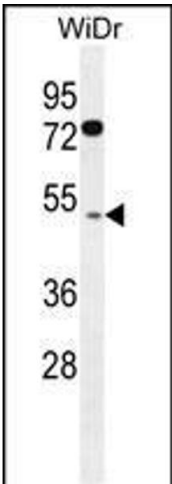
Handling

Format:	Liquid
Buffer:	Purified polyclonal antibody supplied in PBS with 0.09 % (W/V) sodium azide.
Preservative:	Sodium azide
Precaution of Use:	This product contains Sodium azide: a POISONOUS AND HAZARDOUS SUBSTANCE which should be handled by trained staff only.
Storage:	4 °C,-20 °C
Storage Comment:	Maintain refrigerated at 2-8 °C for up to 6 months. For long term storage store at -20 °C in small aliquots to prevent freeze-thaw cycles.
Expiry Date:	6 months



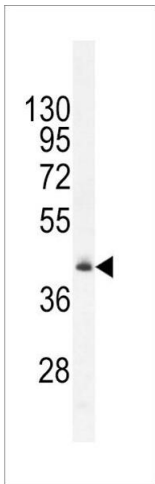
Immunohistochemistry (Paraffin-embedded Sections)

Image 1. RMD1 Antibody (N-term) (ABIN655830 and ABIN2845248) immunohistochemistry analysis in formalin fixed and paraffin embedded mouse heart tissue followed by peroxidase conjugation of the secondary antibody and DAB staining. This data demonstrates the use of RMD1 Antibody (N-term) for immunohistochemistry. Clinical relevance has not been evaluated.



Western Blotting

Image 2. RMD1 Antibody (N-term) (ABIN655830 and ABIN2845248) western blot analysis in WiDr cell line lysates (35 µg/lane). This demonstrates the RMD1 antibody detected the RMD1 protein (arrow).



Western Blotting

Image 3. RMD1 Antibody (N-term) (ABIN655830 and ABIN2845248) western blot analysis in mouse heart tissue lysates (35 µg/lane). This demonstrates the RMD1 antibody detected the RMD1 protein (arrow).