

Datasheet for ABIN655838  
**anti-RNF215 antibody (C-Term)**[Go to Product page](#)

## 3 Images

## Overview

Quantity:	400 µL
Target:	RNF215
Binding Specificity:	AA 266-295, C-Term
Reactivity:	Human, Mouse
Host:	Rabbit
Clonality:	Polyclonal
Conjugate:	This RNF215 antibody is un-conjugated
Application:	Western Blotting (WB), Immunohistochemistry (Paraffin-embedded Sections) (IHC (p))

## Product Details

Immunogen:	This RNF215 antibody is generated from rabbits immunized with a KLH conjugated synthetic peptide between 266-295 amino acids from the C-terminal region of human RNF215.
Clone:	RB29703
Isotype:	Ig Fraction
Purification:	This antibody is purified through a protein A column, followed by peptide affinity purification.

## Target Details

Target:	RNF215
Alternative Name:	RNF215 ( <a href="#">RNF215 Products</a> )
Background:	The function of this protein remains unknown.

## Target Details

Molecular Weight:	41101
Gene ID:	200312
NCBI Accession:	<a href="#">NP_001017981</a>
UniProt:	<a href="#">Q9Y6U7</a>

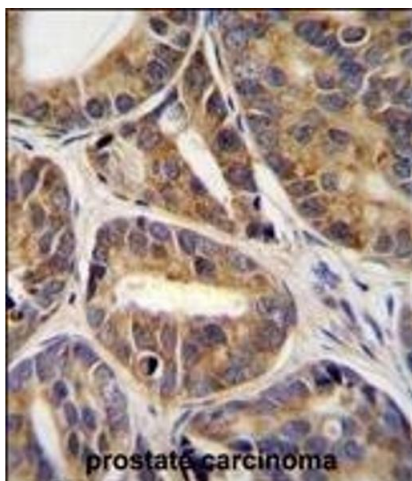
## Application Details

Application Notes:	WB: 1:1000. WB: 1:1000. IHC-P: 1:10~50
Restrictions:	For Research Use only

## Handling

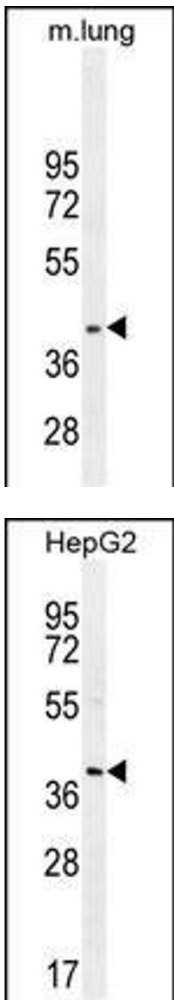
Format:	Liquid
Buffer:	Purified polyclonal antibody supplied in PBS with 0.09 % (W/V) sodium azide.
Preservative:	Sodium azide
Precaution of Use:	This product contains Sodium azide: a POISONOUS AND HAZARDOUS SUBSTANCE which should be handled by trained staff only.
Storage:	4 °C,-20 °C
Storage Comment:	Maintain refrigerated at 2-8 °C for up to 6 months. For long term storage store at -20 °C in small aliquots to prevent freeze-thaw cycles.
Expiry Date:	6 months

## Images



### Immunohistochemistry (Paraffin-embedded Sections)

**Image 1.** RN Antibody (C-term) (ABIN655838 and ABIN2845252) immunohistochemistry analysis in formalin fixed and paraffin embedded human prostate carcinoma tissue followed by peroxidase conjugation of the secondary antibody and DAB staining. This data demonstrates the use of RN Antibody (C-term) for immunohistochemistry. Clinical relevance has not been evaluated.



Western Blotting

**Image 2.** RN Antibody (C-term) (ABIN655838 and ABIN2845252) western blot analysis in mouse lung tissue lysates (35 µg/lane). This demonstrates the RN antibody detected the RN protein (arrow).

Western Blotting

**Image 3.** RN Antibody (C-term) (ABIN655838 and ABIN2845252) western blot analysis in HepG2 cell line lysates (35 µg/lane). This demonstrates the RN antibody detected the RN protein (arrow).