



[Go to Product page](#)

Datasheet for ABIN655840  
**anti-CCNI2 antibody (AA 92-121)**

3 Images

### Overview

Quantity:	400 µL
Target:	CCNI2
Binding Specificity:	AA 92-121
Reactivity:	Human
Host:	Rabbit
Clonality:	Polyclonal
Conjugate:	This CCNI2 antibody is un-conjugated
Application:	Western Blotting (WB), Immunofluorescence (IF), Immunohistochemistry (Paraffin-embedded Sections) (IHC (p))

### Product Details

Immunogen:	This CCNI2 antibody is generated from rabbits immunized with a KLH conjugated synthetic peptide between 92-121 amino acids from the Central region of human CCNI2.
Clone:	RB29709
Isotype:	Ig Fraction
Purification:	This antibody is purified through a protein A column, followed by peptide affinity purification.

### Target Details

Target:	CCNI2
Alternative Name:	CCNI2 ( <a href="#">CCNI2 Products</a> )

## Target Details

---

Background: CCNI2 belongs to the cyclin family.

Molecular Weight: 40622

Gene ID: 645121

NCBI Accession: [NP\\_001034869](#)

UniProt: [Q6ZMN8](#)

## Application Details

---

Application Notes: IF: 1:10~50. WB: 1:1000. IHC-P: 1:10~50

Restrictions: For Research Use only

## Handling

---

Format: Liquid

Buffer: Purified polyclonal antibody supplied in PBS with 0.09 % (W/V) sodium azide.

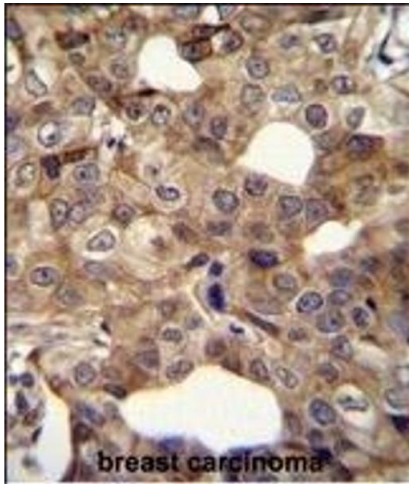
Preservative: Sodium azide

Precaution of Use: This product contains Sodium azide: a POISONOUS AND HAZARDOUS SUBSTANCE which should be handled by trained staff only.

Storage: 4 °C, -20 °C

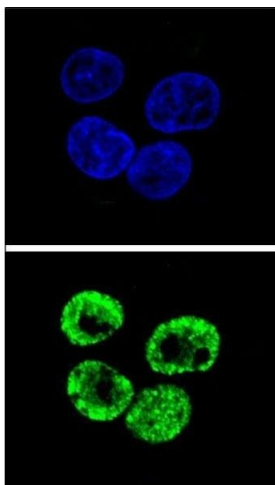
Storage Comment: Maintain refrigerated at 2-8 °C for up to 6 months. For long term storage store at -20 °C in small aliquots to prevent freeze-thaw cycles.

Expiry Date: 6 months



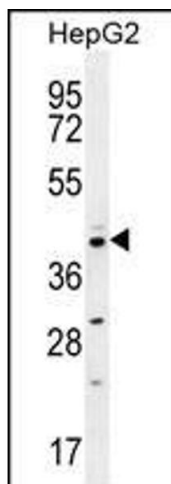
### Immunohistochemistry (Paraffin-embedded Sections)

**Image 1.** CCNI2 Antibody (Center) (ABIN655840 and ABIN2845254) immunohistochemistry analysis in formalin fixed and paraffin embedded human breast carcinoma followed by peroxidase conjugation of the secondary antibody and DAB staining. This data demonstrates the use of CCNI2 Antibody (Center) for immunohistochemistry. Clinical relevance has not been evaluated.



### Immunofluorescence

**Image 2.** Confocal immunofluorescent analysis of CCNI2 Antibody (Center) (ABIN655840 and ABIN2845254) with HepG2 cell followed by Alexa Fluor 488-conjugated goat anti-rabbit IgG (green). DAPI was used to stain the cell nuclear (blue).



### Western Blotting

**Image 3.** CCNI2 Antibody (Center) (ABIN655840 and ABIN2845254) western blot analysis in HepG2 cell line lysates (35 µg/lane). This demonstrates the CCNI2 antibody detected the CCNI2 protein (arrow).