

Datasheet for ABIN655842  
**anti-LRRC38 antibody (C-Term)**

## 3 Images

[Go to Product page](#)

## Overview

Quantity:	400 µL
Target:	LRRC38
Binding Specificity:	AA 188-216, C-Term
Reactivity:	Human
Host:	Rabbit
Clonality:	Polyclonal
Conjugate:	This LRRC38 antibody is un-conjugated
Application:	Western Blotting (WB), Flow Cytometry (FACS), Immunohistochemistry (Paraffin-embedded Sections) (IHC (p))

## Product Details

Immunogen:	This LRRC38 antibody is generated from rabbits immunized with a KLH conjugated synthetic peptide between 188-216 amino acids from the C-terminal region of human LRRC38.
Clone:	RB29738
Isotype:	Ig Fraction
Purification:	This antibody is purified through a protein A column, followed by peptide affinity purification.

## Target Details

Target:	LRRC38
Alternative Name:	LRRC38 ( <a href="#">LRRC38 Products</a> )

## Target Details

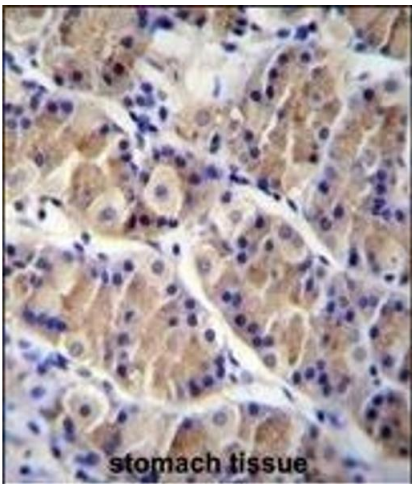
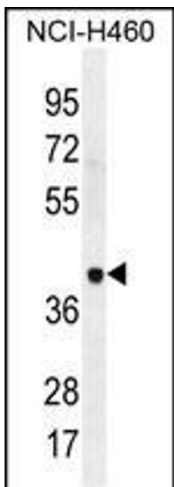
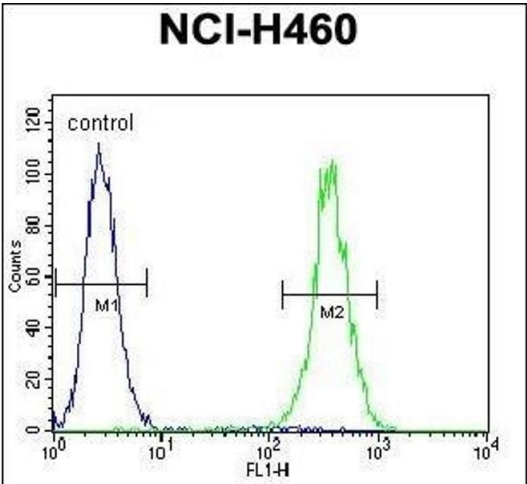
Background:	The function of this protein remains unknown.
Molecular Weight:	32082
Gene ID:	126755
NCBI Accession:	<a href="#">NP_001010847</a>
UniProt:	<a href="#">Q5VT99</a>

## Application Details

Application Notes:	WB: 1:1000. IHC-P: 1:10~50. FC: 1:10~50
Restrictions:	For Research Use only

## Handling

Format:	Liquid
Buffer:	Purified polyclonal antibody supplied in PBS with 0.09 % (W/V) sodium azide.
Preservative:	Sodium azide
Precaution of Use:	This product contains Sodium azide: a POISONOUS AND HAZARDOUS SUBSTANCE which should be handled by trained staff only.
Storage:	4 °C,-20 °C
Storage Comment:	Maintain refrigerated at 2-8 °C for up to 6 months. For long term storage store at -20 °C in small aliquots to prevent freeze-thaw cycles.
Expiry Date:	6 months



### Flow Cytometry

**Image 1.** LRRC38 Antibody (C-term) (ABIN655842 and ABIN2845255) flow cytometric analysis of NCI- cells (right histogram) compared to a negative control cell (left histogram). FITC-conjugated goat-anti-rabbit secondary antibodies were used for the analysis.

### Western Blotting

**Image 2.** LRRC38 Antibody (C-term) (ABIN655842 and ABIN2845255) western blot analysis in NCI- cell line lysates (35 µg/lane). This demonstrates the LRRC38 antibody detected the LRRC38 protein (arrow).

### Immunohistochemistry (Paraffin-embedded Sections)

**Image 3.** LRRC38 Antibody (C-term) (ABIN655842 and ABIN2845255) immunohistochemistry analysis in formalin fixed and paraffin embedded human stomach tissue followed by peroxidase conjugation of the secondary antibody and DAB staining. This data demonstrates the use of LRRC38 Antibody (C-term) for immunohistochemistry. Clinical relevance has not been evaluated.