

Datasheet for ABIN655845
anti-SH2D4B antibody (C-Term)[Go to Product page](#)

3 Images

Overview

Quantity:	400 µL
Target:	SH2D4B
Binding Specificity:	AA 374-402, C-Term
Reactivity:	Human
Host:	Rabbit
Clonality:	Polyclonal
Conjugate:	This SH2D4B antibody is un-conjugated
Application:	Western Blotting (WB), Immunofluorescence (IF), Immunohistochemistry (Paraffin-embedded Sections) (IHC (p))

Product Details

Immunogen:	This SH2D4B antibody is generated from rabbits immunized with a KLH conjugated synthetic peptide between 374-402 amino acids from the C-terminal region of human SH2D4B.
Clone:	RB29757
Isotype:	Ig Fraction
Purification:	This antibody is purified through a protein A column, followed by peptide affinity purification.

Target Details

Target:	SH2D4B
Alternative Name:	SH2D4B (SH2D4B Products)

Target Details

Background: The function of this protein remains unknown.

Molecular Weight: 51232

Gene ID: 387694

NCBI Accession: [NP_001139191](#), [NP_997255](#)

UniProt: [Q5SQS7](#)

Application Details

Application Notes: IF: 1:10~50. WB: 1:1000. IHC-P: 1:10~50

Restrictions: For Research Use only

Handling

Format: Liquid

Buffer: Purified polyclonal antibody supplied in PBS with 0.09 % (W/V) sodium azide.

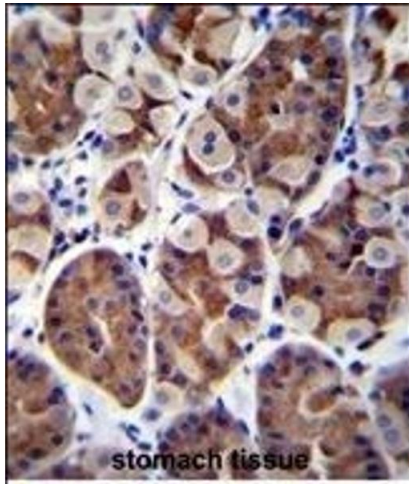
Preservative: Sodium azide

Precaution of Use: This product contains Sodium azide: a POISONOUS AND HAZARDOUS SUBSTANCE which should be handled by trained staff only.

Storage: 4 °C,-20 °C

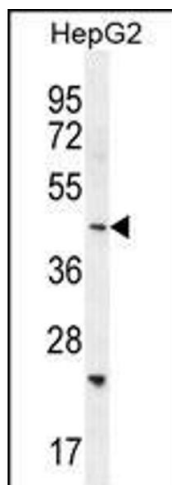
Storage Comment: Maintain refrigerated at 2-8 °C for up to 6 months. For long term storage store at -20 °C in small aliquots to prevent freeze-thaw cycles.

Expiry Date: 6 months



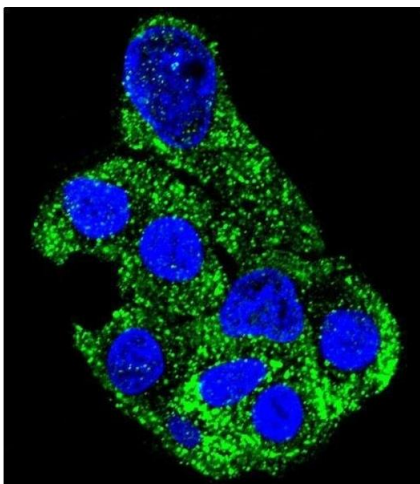
Immunohistochemistry (Paraffin-embedded Sections)

Image 1. SH2D4B Antibody (C-term) (ABIN655845 and ABIN2845257) immunohistochemistry analysis in formalin fixed and paraffin embedded human stomach tissue followed by peroxidase conjugation of the secondary antibody and DAB staining. This data demonstrates the use of SH2D4B Antibody (C-term) for immunohistochemistry. Clinical relevance has not been evaluated.



Western Blotting

Image 2. SH2D4B Antibody (C-term) (ABIN655845 and ABIN2845257) western blot analysis in HepG2 cell line lysates (35 µg/lane). This demonstrates the SH2D4B antibody detected the SH2D4B protein (arrow).



Immunofluorescence

Image 3. Confocal immunofluorescent analysis of SH2D4B Antibody (C-term) (ABIN655845 and ABIN2845257) with HepG2 cell followed by Alexa Fluor 488-conjugated goat anti-rabbit IgG (green). DAPI was used to stain the cell nuclear (blue).