

Datasheet for ABIN655852
anti-C19orf84 antibody (C-Term)[Go to Product page](#)

1 Image

Overview

Quantity:	400 µL
Target:	C19orf84
Binding Specificity:	AA 147-176, C-Term
Reactivity:	Human
Host:	Rabbit
Clonality:	Polyclonal
Conjugate:	This C19orf84 antibody is un-conjugated
Application:	Western Blotting (WB)

Product Details

Immunogen:	This LOC147646 antibody is generated from rabbits immunized with a KLH conjugated synthetic peptide between 147-176 amino acids from the C-terminal region of human LOC147646.
Clone:	RB29879
Isotype:	Ig Fraction
Purification:	This antibody is purified through a protein A column, followed by peptide affinity purification.

Target Details

Target:	C19orf84
Alternative Name:	LOC147646 (C19orf84 Products)

Target Details

Background:	The function of this protein remains unknown.
Molecular Weight:	19687
Gene ID:	147646
UniProt:	G1R1R7

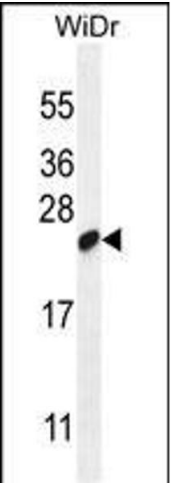
Application Details

Application Notes:	WB: 1:1000
Restrictions:	For Research Use only

Handling

Format:	Liquid
Buffer:	Purified polyclonal antibody supplied in PBS with 0.09 % (W/V) sodium azide.
Preservative:	Sodium azide
Precaution of Use:	This product contains Sodium azide: a POISONOUS AND HAZARDOUS SUBSTANCE which should be handled by trained staff only.
Storage:	4 °C,-20 °C
Storage Comment:	Maintain refrigerated at 2-8 °C for up to 6 months. For long term storage store at -20 °C in small aliquots to prevent freeze-thaw cycles.
Expiry Date:	6 months

Images



Western Blotting

Image 1. LOC147646 Antibody (C-term) (ABIN655852 and ABIN2850489) western blot analysis in WiDr cell line lysates (35 µg/lane). This demonstrates the LOC147646 antibody detected the LOC147646 protein (arrow).