

Datasheet for ABIN655853
anti-LRRC72 antibody (C-Term)



[Go to Product page](#)

1 Image

Overview

Quantity:	400 µL
Target:	LRRC72
Binding Specificity:	AA 193-221, C-Term
Reactivity:	Human
Host:	Rabbit
Clonality:	Polyclonal
Conjugate:	This LRRC72 antibody is un-conjugated
Application:	Western Blotting (WB)

Product Details

Immunogen:	This LRRC72 antibody is generated from rabbits immunized with a KLH conjugated synthetic peptide between 193-221 amino acids from the C-terminal region of human LRRC72.
Clone:	RB29887
Isotype:	Ig Fraction
Purification:	This antibody is purified through a protein A column, followed by peptide affinity purification.

Target Details

Target:	LRRC72
Alternative Name:	LRRC72 (LRRC72 Products)
Background:	The function of this protein remains unknown.

Target Details

Molecular Weight:	33656
Gene ID:	100129335
NCBI Accession:	NP_001182209
UniProt:	A6NJI9

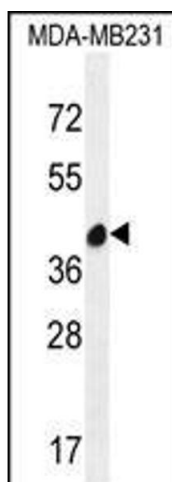
Application Details

Application Notes:	WB: 1:1000
Restrictions:	For Research Use only

Handling

Format:	Liquid
Buffer:	Purified polyclonal antibody supplied in PBS with 0.09 % (W/V) sodium azide.
Preservative:	Sodium azide
Precaution of Use:	This product contains Sodium azide: a POISONOUS AND HAZARDOUS SUBSTANCE which should be handled by trained staff only.
Storage:	4 °C,-20 °C
Storage Comment:	Maintain refrigerated at 2-8 °C for up to 6 months. For long term storage store at -20 °C in small aliquots to prevent freeze-thaw cycles.
Expiry Date:	6 months

Images



Western Blotting

Image 1. LRRC72 Antibody (C-term) (ABIN655853 and ABIN2845261) western blot analysis in MDA-M cell line lysates (35 µg/lane). This demonstrates the LRRC72 antibody detected the LRRC72 protein (arrow).