



[Go to Product page](#)

Datasheet for ABIN655856

anti-SHISA6 antibody (N-Term)

2 Images

Overview

Quantity:	400 µL
Target:	SHISA6
Binding Specificity:	AA 81-109, N-Term
Reactivity:	Human
Host:	Rabbit
Clonality:	Polyclonal
Conjugate:	This SHISA6 antibody is un-conjugated
Application:	Western Blotting (WB), Immunohistochemistry (Paraffin-embedded Sections) (IHC (p))

Product Details

Immunogen:	This SHISA6 antibody is generated from rabbits immunized with a KLH conjugated synthetic peptide between 81-109 amino acids from the N-terminal region of human SHISA6.
Clone:	RB29920
Isotype:	Ig Fraction
Predicted Reactivity:	M
Purification:	This antibody is purified through a protein A column, followed by peptide affinity purification.

Target Details

Target:	SHISA6
Alternative Name:	SHISA6 (SHISA6 Products)

Target Details

Background: The function of this protein remains unknown.

Molecular Weight: 55764

Gene ID: 388336

NCBI Accession: [NP_001166932](#), [NP_001166933](#), [NP_997269](#)

UniProt: [Q6ZSJ9](#)

Application Details

Application Notes: WB: 1:1000. IHC-P: 1:10~50

Restrictions: For Research Use only

Handling

Format: Liquid

Buffer: Purified polyclonal antibody supplied in PBS with 0.09 % (W/V) sodium azide.

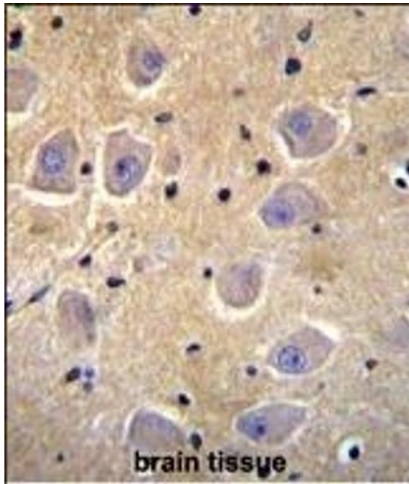
Preservative: Sodium azide

Precaution of Use: This product contains Sodium azide: a POISONOUS AND HAZARDOUS SUBSTANCE which should be handled by trained staff only.

Storage: 4 °C, -20 °C

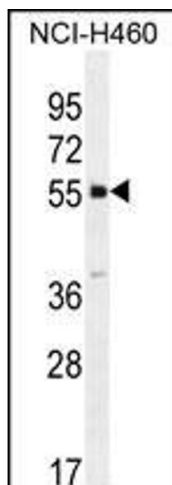
Storage Comment: Maintain refrigerated at 2-8 °C for up to 6 months. For long term storage store at -20 °C in small aliquots to prevent freeze-thaw cycles.

Expiry Date: 6 months



Immunohistochemistry (Paraffin-embedded Sections)

Image 1. SHISA6 Antibody (N-term) (ABIN655856 and ABIN2845263) immunohistochemistry analysis in formalin fixed and paraffin embedded human brain tissue followed by peroxidase conjugation of the secondary antibody and DAB staining. This data demonstrates the use of SHISA6 Antibody (N-term) for immunohistochemistry. Clinical relevance has not been evaluated.



Western Blotting

Image 2. SHISA6 Antibody (N-term) (ABIN655856 and ABIN2845263) western blot analysis in NCI- cell line lysates (35 µg/lane). This demonstrates the SHISA6 antibody detected the SHISA6 protein (arrow).