

Datasheet for ABIN655857  
**anti-PABPN1L antibody (AA 166-194)**[Go to Product page](#)

## 4 Images

## Overview

Quantity:	400 µL
Target:	PABPN1L
Binding Specificity:	AA 166-194
Reactivity:	Human
Host:	Rabbit
Clonality:	Polyclonal
Conjugate:	This PABPN1L antibody is un-conjugated
Application:	Western Blotting (WB), Flow Cytometry (FACS), Immunofluorescence (IF), Immunohistochemistry (Paraffin-embedded Sections) (IHC (p))

## Product Details

Immunogen:	This PABPN1L antibody is generated from rabbits immunized with a KLH conjugated synthetic peptide between 166-194 amino acids from the Central region of human PABPN1L.
Clone:	RB29922
Isotype:	Ig Fraction
Predicted Reactivity:	X, M
Purification:	This antibody is purified through a protein A column, followed by peptide affinity purification.

## Target Details

Target:	PABPN1L
---------	---------

## Target Details

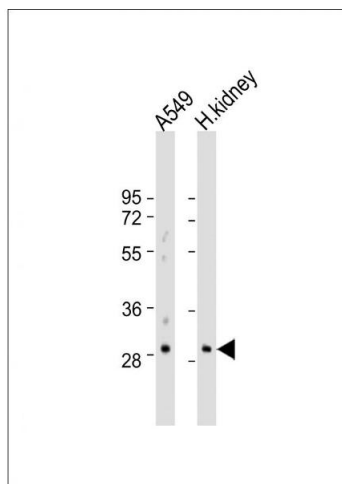
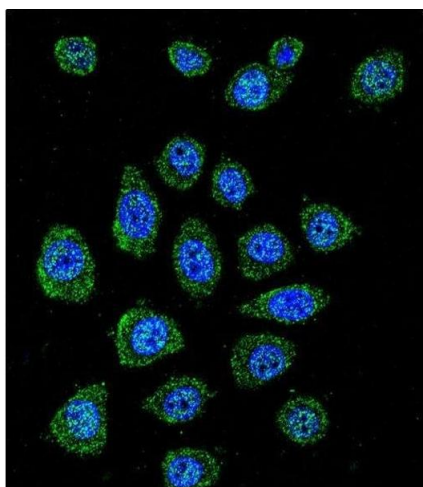
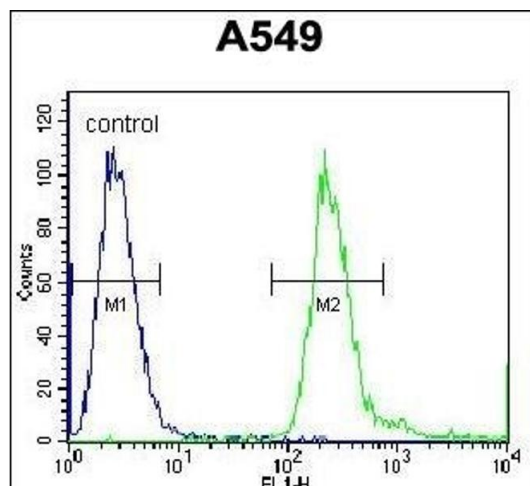
Alternative Name:	LOC390748 ( <a href="#">PABPN1L Products</a> )
Background:	The function of this protein remains unknown.
Gene ID:	390748
NCBI Accession:	<a href="#">NP_001073956</a>
UniProt:	<a href="#">A6NDY0</a>

## Application Details

Application Notes:	IF: 1:10~50. WB: 1:500-1:1000. IHC-P: 1:10~50. FC: 1:10~50
Restrictions:	For Research Use only

## Handling

Format:	Liquid
Buffer:	Purified polyclonal antibody supplied in PBS with 0.09 % (W/V) sodium azide.
Preservative:	Sodium azide
Precaution of Use:	This product contains Sodium azide: a POISONOUS AND HAZARDOUS SUBSTANCE which should be handled by trained staff only.
Storage:	4 °C,-20 °C
Storage Comment:	Maintain refrigerated at 2-8 °C for up to 6 months. For long term storage store at -20 °C in small aliquots to prevent freeze-thaw cycles.
Expiry Date:	6 months



### Flow Cytometry

**Image 1.** BPN1L Antibody (Center) (ABIN655857 and ABIN2845264) flow cytometric analysis of A549 cells (right histogram) compared to a negative control cell (left histogram). FITC-conjugated goat-anti-rabbit secondary antibodies were used for the analysis.

### Immunofluorescence

**Image 2.** Confocal immunofluorescent analysis of BPN1L Antibody (Center) (ABIN655857 and ABIN2845264) with A549 cell followed by Alexa Fluor 488-conjugated goat anti-rabbit IgG (green). DAPI was used to stain the cell nuclear (blue).

### Western Blotting

**Image 3.** All lanes : Anti-BPN1L Antibody (Center) at 1:500-1:1000 dilution Lane 1: A549 whole cell lysate Lane 2: human kidney lysate Lysates/proteins at 20 µg per lane. Secondary Goat Anti-Rabbit IgG, (H+L), Peroxidase conjugated at 1/10000 dilution. Predicted band size : 30 kDa Blocking/Dilution buffer: 5 % NFDM/TBST.

Please check the [product details page](#) for more images. Overall 4 images are available for ABIN655857.