



[Go to Product page](#)

Datasheet for ABIN655858
anti-NKX1-1 antibody (AA 230-258)

2 Images

Overview

Quantity:	400 µL
Target:	NKX1-1
Binding Specificity:	AA 230-258
Reactivity:	Human
Host:	Rabbit
Clonality:	Polyclonal
Conjugate:	This NKX1-1 antibody is un-conjugated
Application:	Western Blotting (WB), Immunofluorescence (IF)

Product Details

Immunogen:	This NKX1-1 antibody is generated from rabbits immunized with a KLH conjugated synthetic peptide between 230-258 amino acids from the Central region of human NKX1-1.
Clone:	RB29925
Isotype:	Ig Fraction
Purification:	This antibody is purified through a protein A column, followed by peptide affinity purification.

Target Details

Target:	NKX1-1
Alternative Name:	NKX1-1 (NKX1-1 Products)
Background:	The function of this protein remains unknown.

Target Details

Molecular Weight:	40659
Gene ID:	54729
UniProt:	Q15270
Pathways:	Regulation of Carbohydrate Metabolic Process

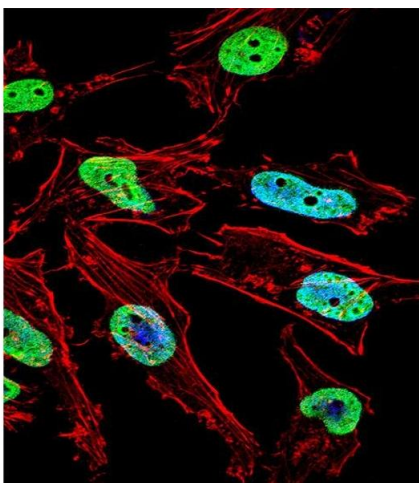
Application Details

Application Notes:	IF: 1:10~50. WB: 1:1000
Restrictions:	For Research Use only

Handling

Format:	Liquid
Buffer:	Purified polyclonal antibody supplied in PBS with 0.09 % (W/V) sodium azide.
Preservative:	Sodium azide
Precaution of Use:	This product contains Sodium azide: a POISONOUS AND HAZARDOUS SUBSTANCE which should be handled by trained staff only.
Storage:	4 °C,-20 °C
Storage Comment:	Maintain refrigerated at 2-8 °C for up to 6 months. For long term storage store at -20 °C in small aliquots to prevent freeze-thaw cycles.
Expiry Date:	6 months

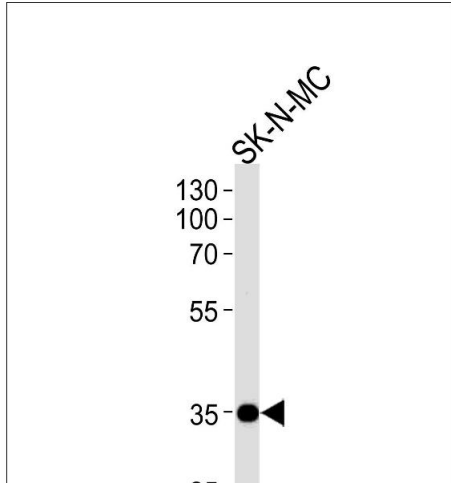
Images



Immunofluorescence

Image 1. Fluorescent confocal image of HeLa cell stained with NKX1-1 Antibody (Center) (ABIN655858 and ABIN2845265). HeLa cells were fixed with 4 % PFA (20 min), permeabilized with Triton X-100 (0.1 %, 10 min), then incubated with NKX1-1 primary antibody (1:25, 1 h at 37 °C). For secondary antibody, Alexa Fluor® 488 conjugated donkey anti-rabbit antibody (green) was used (1:400, 50 min at 37 °C). Cytoplasmic actin was counterstained with Alexa

Fluor® 555 (red) conjugated Phalloidin (7 units/mL, 1 h at 37 °C). Nuclei were counterstained with DAPI (blue) (10 µg/mL, 10 min). NKX1-1 immunoreactivity is localized to Nucleus significantly.



Western Blotting

Image 2. NKX1-1 Antibody (Center) (ABIN655858 and ABIN2845265) western blot analysis in SK-N-MC cell line lysates (35 µg/lane). This demonstrates the NKX1-1 antibody detected the NKX1-1 protein (arrow).