

Datasheet for ABIN655865  
**anti-TMPRSS11E antibody (AA 249-277)**



[Go to Product page](#)

1 Image

## Overview

Quantity:	400 µL
Target:	TMPRSS11E
Binding Specificity:	AA 249-277
Reactivity:	Human
Host:	Rabbit
Clonality:	Polyclonal
Conjugate:	This TMPRSS11E antibody is un-conjugated
Application:	Western Blotting (WB)

## Product Details

Immunogen:	This TMPRSS11E2 antibody is generated from rabbits immunized with a KLH conjugated synthetic peptide between 249-277 amino acids from the Central region of human TMPRSS11E2.
Clone:	RB29960
Isotype:	Ig Fraction
Purification:	This antibody is purified through a protein A column, followed by peptide affinity purification.

## Target Details

Target:	TMPRSS11E
Alternative Name:	TMPRSS11E2 ( <a href="#">TMPRSS11E Products</a> )

## Target Details

---

Background:	TMPRSS11E is a serine protease which possesses both gelatinolytic and caseinolytic activities. Shows a preference for Arg in the P1 position (By similarity).
Molecular Weight:	47696
Gene ID:	28983
NCBI Accession:	<a href="#">NP_054777</a>
UniProt:	<a href="#">Q9UL52</a>

## Application Details

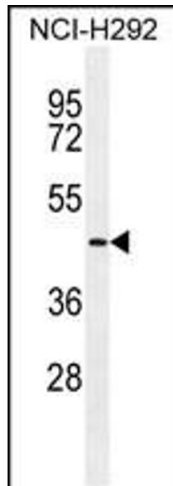
---

Application Notes:	WB: 1:1000
Restrictions:	For Research Use only

## Handling

---

Format:	Liquid
Buffer:	Purified polyclonal antibody supplied in PBS with 0.09 % (W/V) sodium azide.
Preservative:	Sodium azide
Precaution of Use:	This product contains Sodium azide: a POISONOUS AND HAZARDOUS SUBSTANCE which should be handled by trained staff only.
Storage:	4 °C,-20 °C
Storage Comment:	Maintain refrigerated at 2-8 °C for up to 6 months. For long term storage store at -20 °C in small aliquots to prevent freeze-thaw cycles.
Expiry Date:	6 months



#### Western Blotting

**Image 1.** TRSS11E2 Antibody (Center) (ABIN655865 and ABIN2837858) western blot analysis in NCI- cell line lysates (35 µg/lane). This demonstrates the TRSS11E2 antibody detected the TRSS11E2 protein (arrow).