

Datasheet for ABIN655867
anti-CGA antibody (C-Term)[Go to Product page](#)

1 Image

Overview

Quantity:	400 µL
Target:	CGA
Binding Specificity:	AA 74-103, C-Term
Reactivity:	Human
Host:	Rabbit
Clonality:	Polyclonal
Conjugate:	This CGA antibody is un-conjugated
Application:	Western Blotting (WB)

Product Details

Immunogen:	This TSH-alpha antibody is generated from rabbits immunized with a KLH conjugated synthetic peptide between 74-103 amino acids from the C-terminal region of human TSH-alpha.
Clone:	RB31319
Isotype:	Ig Fraction
Purification:	This antibody is purified through a protein A column, followed by peptide affinity purification.

Target Details

Target:	CGA
Alternative Name:	TSH-alpha (CGA Products)
Background:	The four human glycoprotein hormones chorionic gonadotropin (CG), luteinizing hormone (LH),

Target Details

follicle stimulating hormone (FSH), and thyroid stimulating hormone (TSH) are dimers consisting of alpha and beta subunits that are associated noncovalently. The alpha subunits of these hormones are identical, however, their beta chains are unique and confer biological specificity. The protein encoded by this gene is the alpha subunit and belongs to the glycoprotein hormones alpha chain family.

Molecular Weight: 13075

Gene ID: 1081

NCBI Accession: [NP_000726](#), [NP_001239312](#)

UniProt: [P01215](#)

Pathways: [Metabolism of Steroid Hormones and Vitamin D](#), [Thyroid Hormone Synthesis](#), [Hormone Transport](#), [Peptide Hormone Metabolism](#)

Application Details

Application Notes: WB: 1:1000

Restrictions: For Research Use only

Handling

Format: Liquid

Buffer: Purified polyclonal antibody supplied in PBS with 0.09 % (W/V) sodium azide.

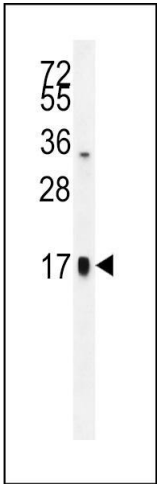
Preservative: Sodium azide

Precaution of Use: This product contains Sodium azide: a POISONOUS AND HAZARDOUS SUBSTANCE which should be handled by trained staff only.

Storage: 4 °C,-20 °C

Storage Comment: Maintain refrigerated at 2-8 °C for up to 6 months. For long term storage store at -20 °C in small aliquots to prevent freeze-thaw cycles.

Expiry Date: 6 months



Western Blotting

Image 1. TSH-alpha Antibody (C-term) (ABIN655867 and ABIN2845273) western blot analysis in HepG2 cell line lysates (35 µg/lane). This demonstrates the TSH-alpha antibody detected the TSH-alpha protein (arrow).