

Datasheet for ABIN655869
anti-PRSS3 antibody (AA 136-163)

3 Images

[Go to Product page](#)

Overview

Quantity:	400 µL
Target:	PRSS3
Binding Specificity:	AA 136-163
Reactivity:	Human
Host:	Rabbit
Clonality:	Polyclonal
Conjugate:	This PRSS3 antibody is un-conjugated
Application:	Western Blotting (WB), Flow Cytometry (FACS), Immunohistochemistry (Paraffin-embedded Sections) (IHC (p))

Product Details

Immunogen:	This PRSS3 antibody is generated from rabbits immunized with a KLH conjugated synthetic peptide between 136-163 amino acids from the Central region of human PRSS3.
Clone:	RB31598
Isotype:	Ig Fraction
Purification:	This antibody is purified through a protein A column, followed by peptide affinity purification.

Target Details

Target:	PRSS3
Alternative Name:	PRSS3 (PRSS3 Products)

Target Details

Background: This gene encodes a trypsinogen, which is a member of the trypsin family of serine proteases. This enzyme is expressed in the brain and pancreas and is resistant to common trypsin inhibitors. It is active on peptide linkages involving the carboxyl group of lysine or arginine. This gene is localized to the locus of T cell receptor beta variable orphans on chromosome 9. Four transcript variants encoding different isoforms have been described for this gene.

Molecular Weight: 32529

Gene ID: 5646

NCBI Accession: [NP_001184026](#), [NP_002762](#), [NP_031369](#)

UniProt: [P35030](#)

Application Details

Application Notes: WB: 1:1000. IHC-P: 1:10~50. FC: 1:10~50

Restrictions: For Research Use only

Handling

Format: Liquid

Buffer: Purified polyclonal antibody supplied in PBS with 0.09 % (W/V) sodium azide.

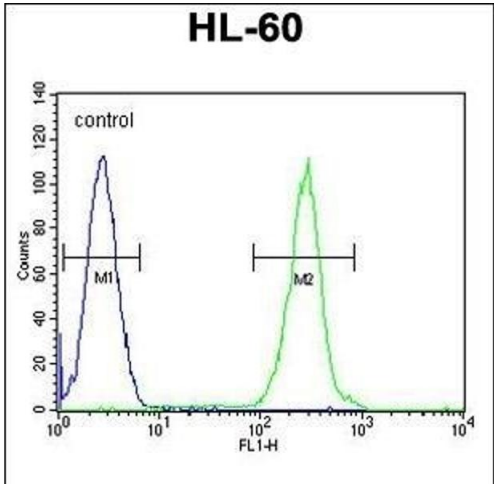
Preservative: Sodium azide

Precaution of Use: This product contains Sodium azide: a POISONOUS AND HAZARDOUS SUBSTANCE which should be handled by trained staff only.

Storage: 4 °C,-20 °C

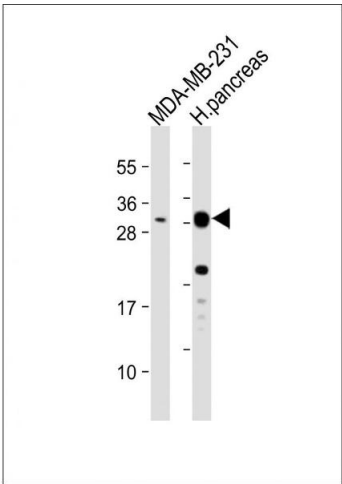
Storage Comment: Maintain refrigerated at 2-8 °C for up to 6 months. For long term storage store at -20 °C in small aliquots to prevent freeze-thaw cycles.

Expiry Date: 6 months



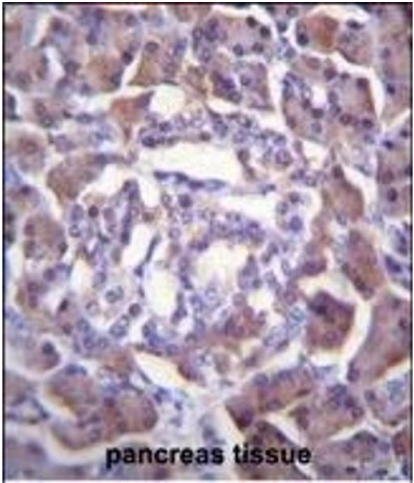
Flow Cytometry

Image 1. PRSS3 Antibody (Center) (ABIN655869 and ABIN2845275) flow cytometric analysis of HL-60 cells (right histogram) compared to a negative control cell (left histogram). FITC-conjugated goat-anti-rabbit secondary antibodies were used for the analysis.



Western Blotting

Image 2. All lanes : Anti-PRSS3 Antibody (Center) at 1:1000 dilution Lane 1: MDA-MB-231 whole cell lysate Lane 2: human pancreas lysate Lysates/proteins at 20 µg per lane. Secondary Goat Anti-Rabbit IgG, (H+L), Peroxidase conjugated at 1/10000 dilution. Predicted band size : 33 kDa Blocking/Dilution buffer: 5 % NFDm/TBST.



Immunohistochemistry (Paraffin-embedded Sections)

Image 3. PRSS3 Antibody (Center) (ABIN655869 and ABIN2845275) immunohistochemistry analysis in formalin fixed and paraffin embedded human pancreas tissue followed by peroxidase conjugation of the secondary antibody and DAB staining. This data demonstrates the use of PRSS3 Antibody (Center) for immunohistochemistry. Clinical relevance has not been evaluated.